

Temperature Record
Investigational Product Stored at Room Temperature (15 to 25 °C)
CH08

Model: TP211318

PHRCR2 (B2)

Date (DD/MM/YYYY)	Time (24hr)	Temperature (°C)			Signature (Initial)	Comments
		Now	Max	Min		
01 / OCT / 2022	1158	20.1	21.8	18.9	YPL	
02 / OCT / 2022						Sunday
03 / OCT / 2022	1424	20.3	20.5	18.4	SYW	
04 / OCT / 2022	0930	19.5	22.0	18.5	HSC	
05 / OCT / 2022	1031	20.1	20.1	18.4	HSC	
06 / OCT / 2022	0940	19.4	20.8	18.5	HSC	
07 / OCT / 2022	0947	19.7	20.3	18.7	HSC	
08 / OCT / 2022	1052	18.6	20.6	17.9	HSC	
09 / OCT / 2022						Sunday
10 / OCT / 2022						National Day
11 / OCT / 2022	1537	18.4	20.3	17.3	HSC	
12 / OCT / 2022	1503	18.8	18.9	17.3	HSC	
13 / OCT / 2022	1010	19.8	19.9	17.7	HSC	
14 / OCT / 2022	1102	19.3	21.0	18.3	HSC	
15 / OCT / 2022	1153	19.5	19.9	18.5	YPL	
16 / OCT / 2022						Sunday
17 / OCT / 2022	1154	20.0	22.6	18.7	HSC	
18 / OCT / 2022	1006	19.4	20.3	17.8	HSC	
19 / OCT / 2022	1034	20.2	20.2	17.7	HSC	
20 / OCT / 2022	1011	18.6	20.6	17.4	HSC	
21 / OCT / 2022	1040	19.5	20.3	17.8	HSC	
22 / OCT / 2022	1146	19.8	22.2	18.5	HSC	
23 / OCT / 2022						Sunday
24 / OCT / 2022	1122	18.2	23.2	17.5	HSC	
25 / OCT / 2022	1107	18.4	19.1	17.4	HSC	
26 / OCT / 2022	1017	18.7	19.3	17.5	HSC	
27 / OCT / 2022	1004	19.5	19.6	17.9	KLH	
28 / OCT / 2022	1448	19.1	22.3	17.9	HSC	
29 / OCT / 2022	1107	19.3	22.4	18.0	HSC	
30 / OCT / 2022						Sunday
31 / OCT / 2022	1501	19.4	22.5	18.0	HSC	

 Pharmacist: *Meg Sh Ch*

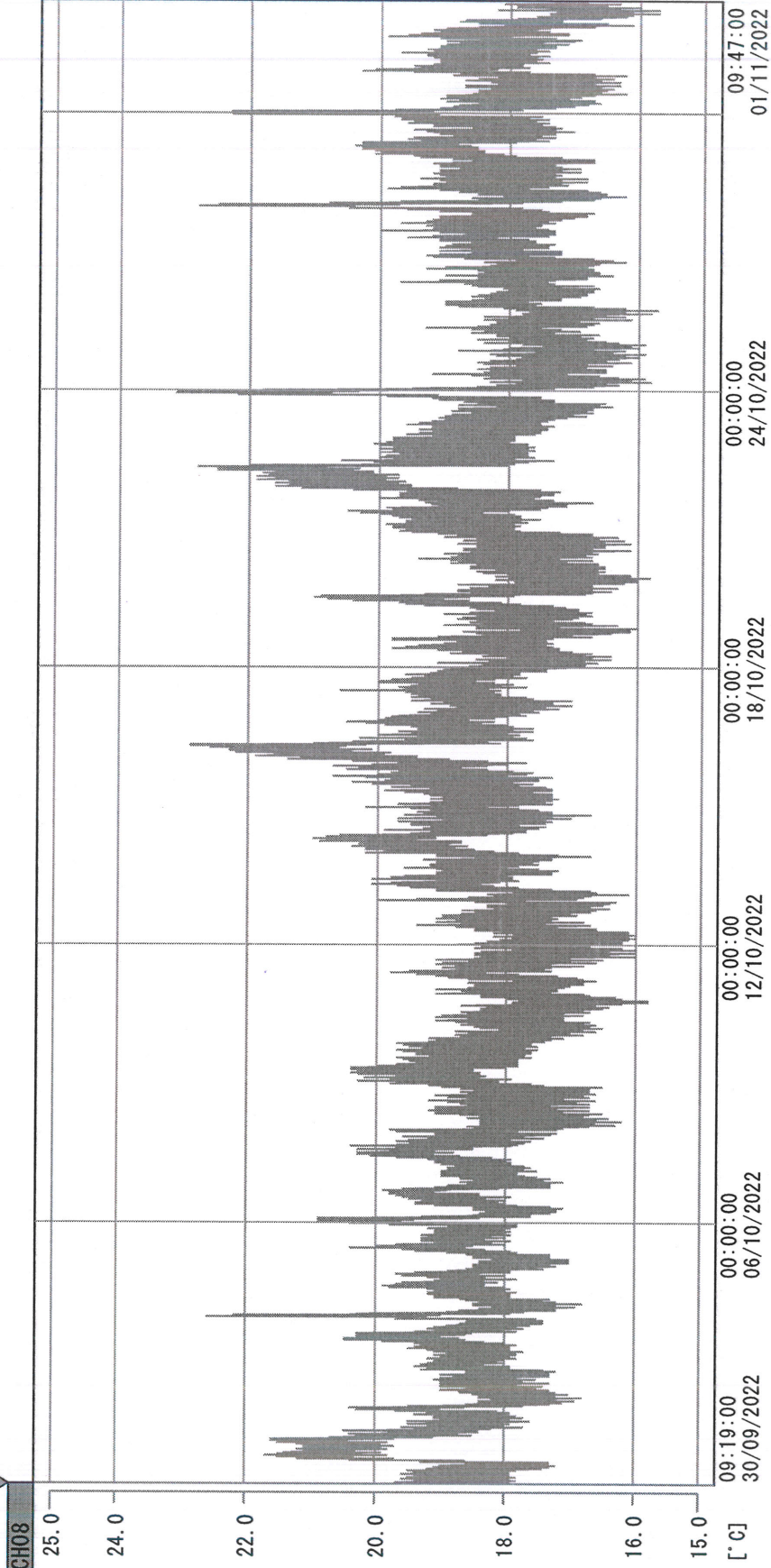
31 OCT 2022

Page 1

(From JUN/2012 v0.4)

0000_220930091827.dlm

DISP_GRP_1



30/09/2022 09:19:00

1. OPT	-21.7 [°C]	2. Multi	-27.1 [°C]	3. B1GT	22.1 [°C]	4. SC-140	5.2 [°C]
5. SC160	4.0 [°C]	6. 201SAR	3.6 [°C]	7. SC160	3.9 [°C]	8. B2GT	18.4 [°C]
TAG01	23.8 [°C]	10. KCC-3	4.3 [°C]	TAG01	-75.0 [°C]	TAG01	-75.0 [°C]

Zgshch
01/10/2022