

**Temperature Record**
**Investigational Product Stored Under Refrigerated Condition (2 to 8 °C)**

B2 Model: KCC3 TP 211320

CH10

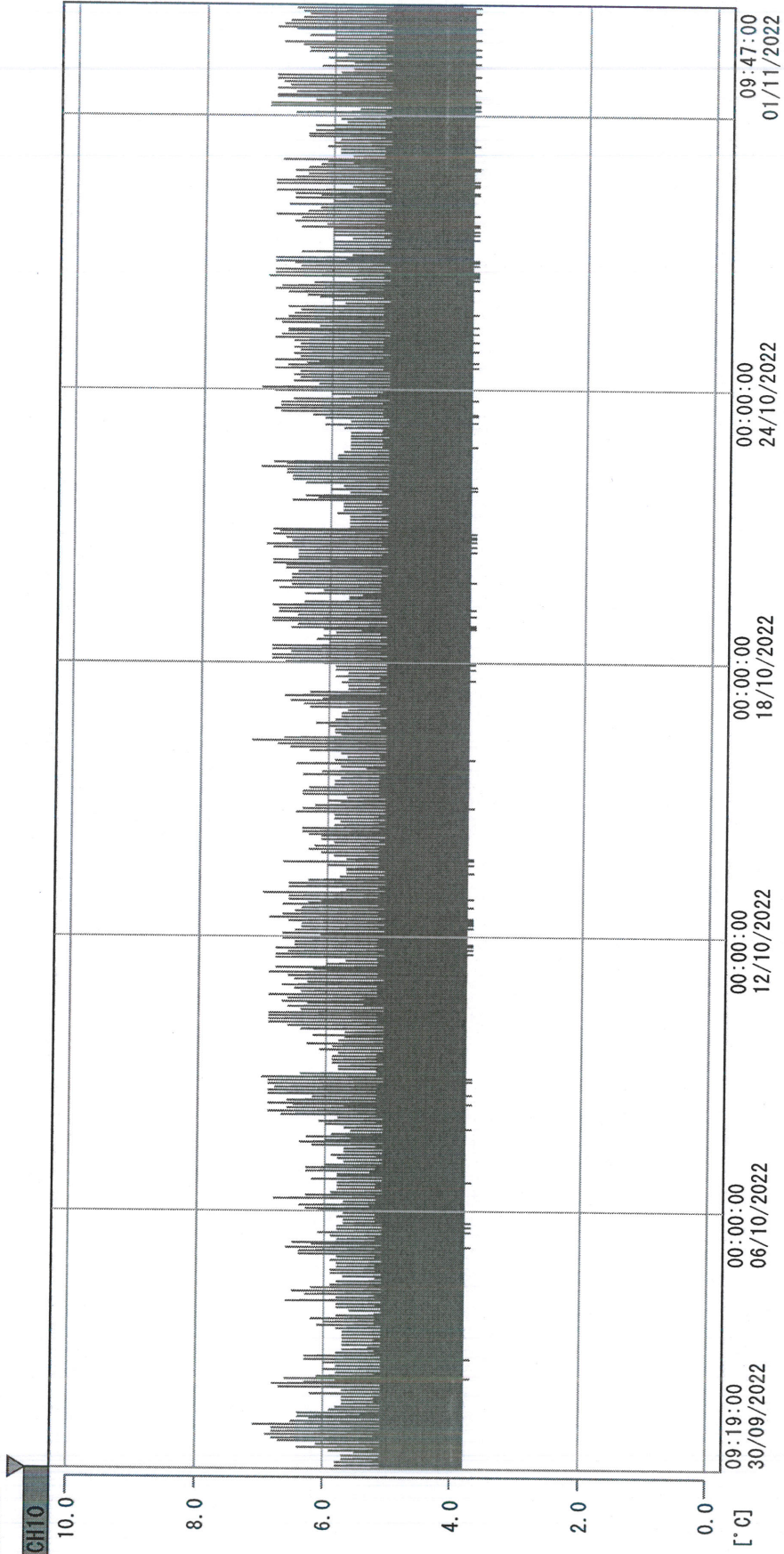
Date (DD/MMM/YYYY)	Time (24hr)	Temperature (°C)			Signature (Initial)	Comments
		Now	Max	Min		
01 / OCT / 2022	1201	5.1	6.0	4.6	YPL	
02 / OCT / 2022						Sunday
03 / OCT / 2022	1425	4.7	5.8	4.6	SYW	
04 / OCT / 2022	0932	4.8	6.0	4.5	HSC	
05 / OCT / 2022	1033	4.7	5.9	4.6	HSC	
06 / OCT / 2022	0942	4.8	6.0	4.6	HSC	
07 / OCT / 2022	0949	4.7	5.9	4.6	HSC	
08 / OCT / 2022	1054	4.7	5.9	4.5	HSC	
09 / OCT / 2022						Sunday
10 / OCT / 2022						National Day
11 / OCT / 2022	1538	4.8	5.9	4.6	HSC	
12 / OCT / 2022	1505	4.7	6.0	4.5	HSC	
13 / OCT / 2022	1012	4.8	6.0	4.4	HSC	
14 / OCT / 2022	1104	4.7	5.9	4.5	HSC	
15 / OCT / 2022	1157	4.8	5.6	4.5	YPL	
16 / OCT / 2022						Sunday
17 / OCT / 2022	1155	4.7	5.8	4.4	HSC	
18 / OCT / 2022	1007	4.7	6.0	4.5	HSC	
19 / OCT / 2022	1036	4.6	6.0	4.6	HSC	
20 / OCT / 2022	1013	4.6	5.9	4.6	HSC	
21 / OCT / 2022	1042	4.7	5.9	4.4	HSC	
22 / OCT / 2022	1148	4.6	6.0	4.5	HSC	
23 / OCT / 2022						Sunday
24 / OCT / 2022	1123	5.4	5.9	4.5	HSC	
25 / OCT / 2022	1109	4.8	5.9	4.4	HSC	
26 / OCT / 2022	1019	4.7	5.9	4.4	HSC	
27 / OCT / 2022	1006	4.6	5.8	4.5	KLH	
28 / OCT / 2022	1450	4.6	5.9	4.4	HSC	
29 / OCT / 2022	1109	4.8	6.0	4.4	HSC	
30 / OCT / 2022						Sunday
31 / OCT / 2022	1503	5.2	5.9	4.5	HSC	

 Pharmacist: *Yg Shoh* +

31 OCT 2022

0000\_220930091827.dlm

DISP\_GRP\_1



30/09/2022 09:19:00

1. OPT	-21.7 [°C]	2. Multi	-27.1 [°C]	3. B1CT	22.1 [°C]	4. SC-140	5.2 [°C]
5. SC160	4.0 [°C]	6. 201SAR	3.6 [°C]	7. SC160	3.9 [°C]	8. B2CT	18.4 [°C]
TAG01	23.8 [°C]	10. KCC-3	4.3 [°C]	TAG01	-75.0 [°C]	TAG01	-75.0 [°C]

*Handwritten signature*

01 NOV 2022