

Temperature Record

Investigational Product Stored at Room Temperature (15 to 25 °C)

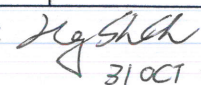
CH03

Model: TP211283

PHRCR1 (B1)

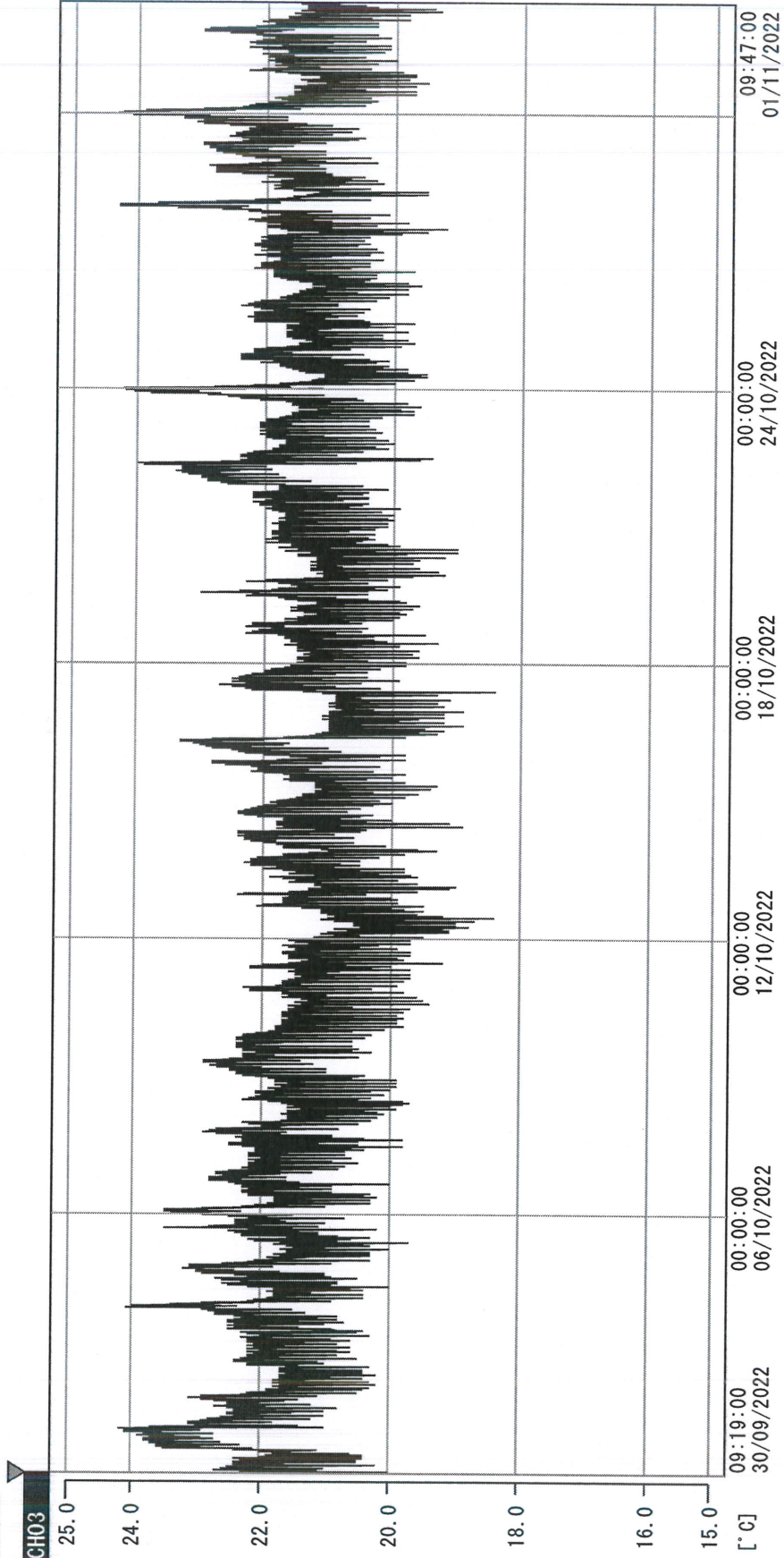
Date (DD/MMM/YYYY)	Time (24hr)	Temperature (°C)			Signature (Initial)	Comments
		Now	Max	Min		
01 / OCT / 2022	0907	23.8	24.4	21.9	YPL	
02 / OCT / 2022						Sunday
03 / OCT / 2022	0833	21.9	23.8	21.7	JHW.	
04 / OCT / 2022	0902	22.3	24.9	21.8	HSC	
05 / OCT / 2022	0858	22.2	23.6	21.5	HSC	
06 / OCT / 2022	0905	22.0	23.8	21.8	HSC	
07 / OCT / 2022	0903	22.2	23.1	21.9	HSC	
08 / OCT / 2022	0911	21.8	23.3	21.4	HSC	
09 / OCT / 2022						Sunday
10 / OCT / 2022						National Day
11 / OCT / 2022	0906	22.1	22.9	20.9	HSC	
12 / OCT / 2022	0906	20.3	22.2	20.3	HSC	
13 / OCT / 2022	0909	21.2	22.3	20.3	HSC	
14 / OCT / 2022	0911	21.7	22.5	20.7	HSC	
15 / OCT / 2022	0925	21.3	22.3	20.7	YPL	
16 / OCT / 2022						Sunday
17 / OCT / 2022	0905	20.5	23.1	20.3	HSC	
18 / OCT / 2022	0915	21.5	22.6	20.5	HSC	
19 / OCT / 2022	0907	21.5	22.4	21.1	HSC	
20 / OCT / 2022	0904	21.5	23.0	20.7	HSC	
21 / OCT / 2022	0859	22.1	22.1	21.3	HSC	
22 / OCT / 2022	0900	23.6	23.7	21.4	HSC	
23 / OCT / 2022						Sunday
24 / OCT / 2022	0918	21.4	24.2	21.8	HSC	
25 / OCT / 2022	0906	21.8	22.5	21.0	HSC	
26 / OCT / 2022	0907	21.6	22.6	20.8	HSC	
27 / OCT / 2022	0915	21.3	22.2	21.1	SW.	
28 / OCT / 2022	0809	21.5	24.4	20.9	HSC	
29 / OCT / 2022	0907	22.6	23.2	21.5	HSC	
30 / OCT / 2022						Sunday
31 / OCT / 2022	0906	21.8	24.5	20.8	HSC	

Pharmacist:


 31 OCT 2022

0000_220930091827.dfm

DISP_GRP_1



30/09/2022 09:19:00

1. OPT	-21.7 [°C]	2. Multi	-27.1 [°C]	3. B1CT	22.1 [°C]	4. SC-140	5.2 [°C]
5. SC160	4.0 [°C]	6. 201SAR	3.6 [°C]	7. SC160	3.9 [°C]	8. B2CT	18.4 [°C]
TAG01	23.8 [°C]	10. KCC-3	4.3 [°C]	TAG01	-75.0 [°C]	TAG01	-75.0 [°C]

Lyshch
01/10/2022