

Temperature Record

Investigational Product Stored Under Refrigerated Condition (2 to 8 °C)

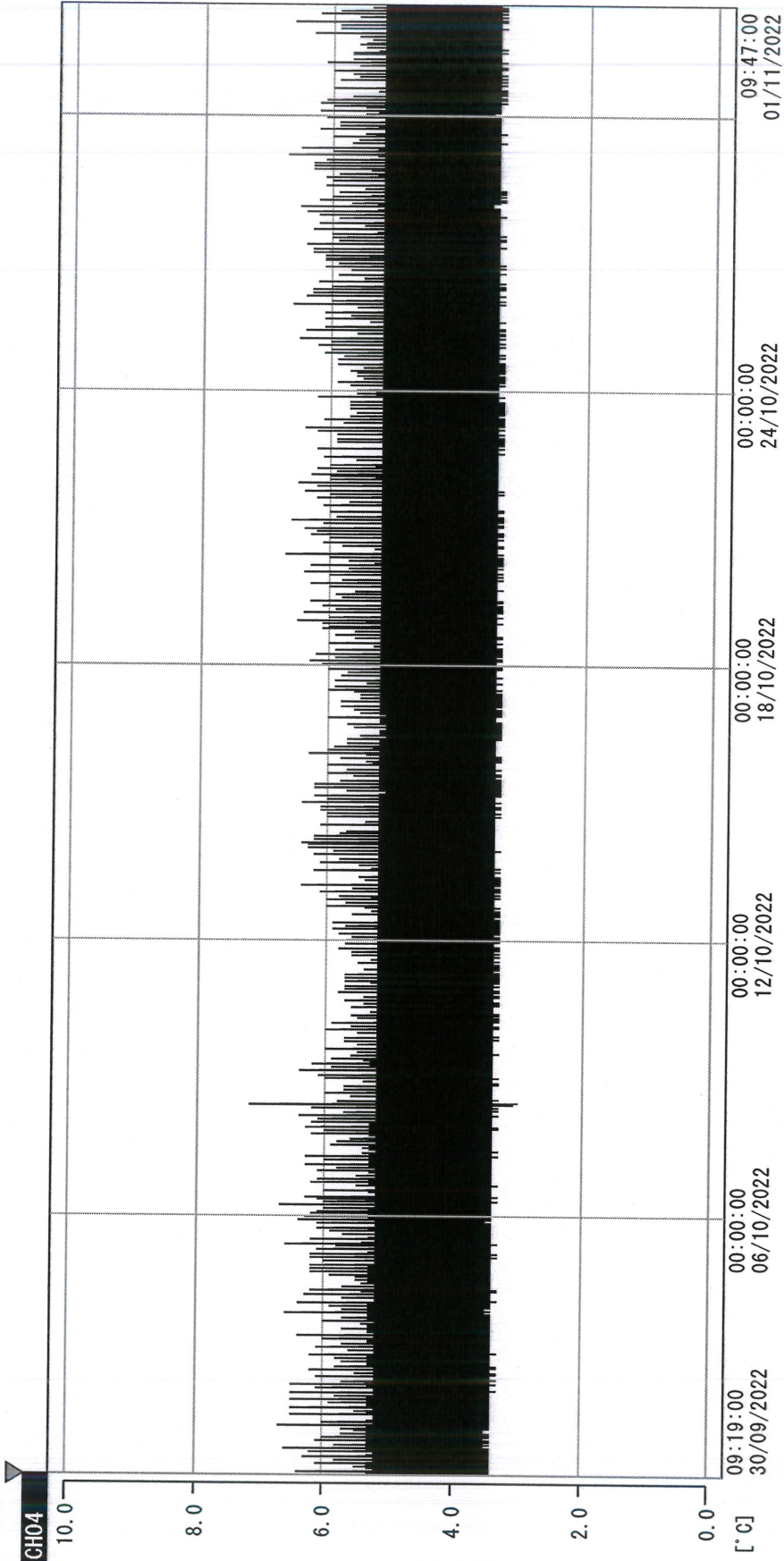
CH04

Model: SC-140E-CT (G1404001) TP211284

Date (DD/MM/YY)	Time (24hr)	Temperature (°C)			Signature (Initial)	Comments
		Now	Max	Min		
01 / OCT / 2022	0908	4.4	5.2	4.4	YPL	
02 / OCT / 2022						Sunday
03 / OCT / 2022	0835	4.4	5.2	4.3	STW	
04 / OCT / 2022	0900	4.4	5.1	4.3	HSC	
05 / OCT / 2022	0857	4.4	4.9	4.3	HSC	
06 / OCT / 2022	0908	4.4	5.2	4.4	HSC	
07 / OCT / 2022	0902	4.6	5.1	4.4	HSC	
08 / OCT / 2022	0910	4.4	5.1	4.4	HSC	
09 / OCT / 2022						Sunday
10 / OCT / 2022						National Day
11 / OCT / 2022	0905	4.7	5.6	4.4	HSC	
12 / OCT / 2022	0905	4.4	4.9	4.4	HSC	
13 / OCT / 2022	0908	4.7	5.1	4.4	HSC	
14 / OCT / 2022	0911	4.7	5.1	4.4	HSC	
15 / OCT / 2022	0939	4.6	5.1	4.4	YPL	
16 / OCT / 2022						Sunday
17 / OCT / 2022	0905	4.5	5.0	4.4	HSC	
18 / OCT / 2022	0914	4.6	5.0	4.4	HSC	
19 / OCT / 2022	0906	4.5	5.1	4.4	HSC	
20 / OCT / 2022	0903	4.5	5.1	4.4	HSC	
21 / OCT / 2022	0858	4.6	5.2	4.4	HSC	
22 / OCT / 2022	0859	4.6	5.1	4.4	HSC	
23 / OCT / 2022						Sunday
24 / OCT / 2022	0917	4.5	5.1	4.4	HSC	
25 / OCT / 2022	0905	4.5	5.1	4.4	HSC	
26 / OCT / 2022	0907	4.7	5.2	4.4	HSC	
27 / OCT / 2022	0917	4.6	5.2	4.4	STW	
28 / OCT / 2022	0808	4.6	5.1	4.4	HSC	
29 / OCT / 2022	0907	4.6	5.2	4.4	HSC	
30 / OCT / 2022						Sunday
31 / OCT / 2022	0905	4.7	5.0	4.4	HSC	

 Pharmacist: *[Signature]*
 31 OCT 2022

0000_220930091827.dfm
 DISP_GRP_1



30/09/2022 09:19:00

1. OPT	-21.7 [°C]	2. Multi	-27.1 [°C]	3. B1CT	22.1 [°C]	4. SC-140	5.2 [°C]
5. SC160	4.0 [°C]	6. 201SAR	3.6 [°C]	7. SC160	3.9 [°C]	8. B2CT	18.4 [°C]
TAG01	23.8 [°C]	10. KCC-3	4.3 [°C]	TAG01	-75.0 [°C]	TAG01	-75.0 [°C]

YgShch
 01 NOV 2022