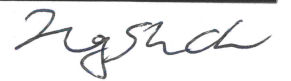


Temperature Record
Investigational Product Stored Under Refrigerated Condition (2 to 8 °C)

B2 Model: SC-160E (H1224001) TP211307

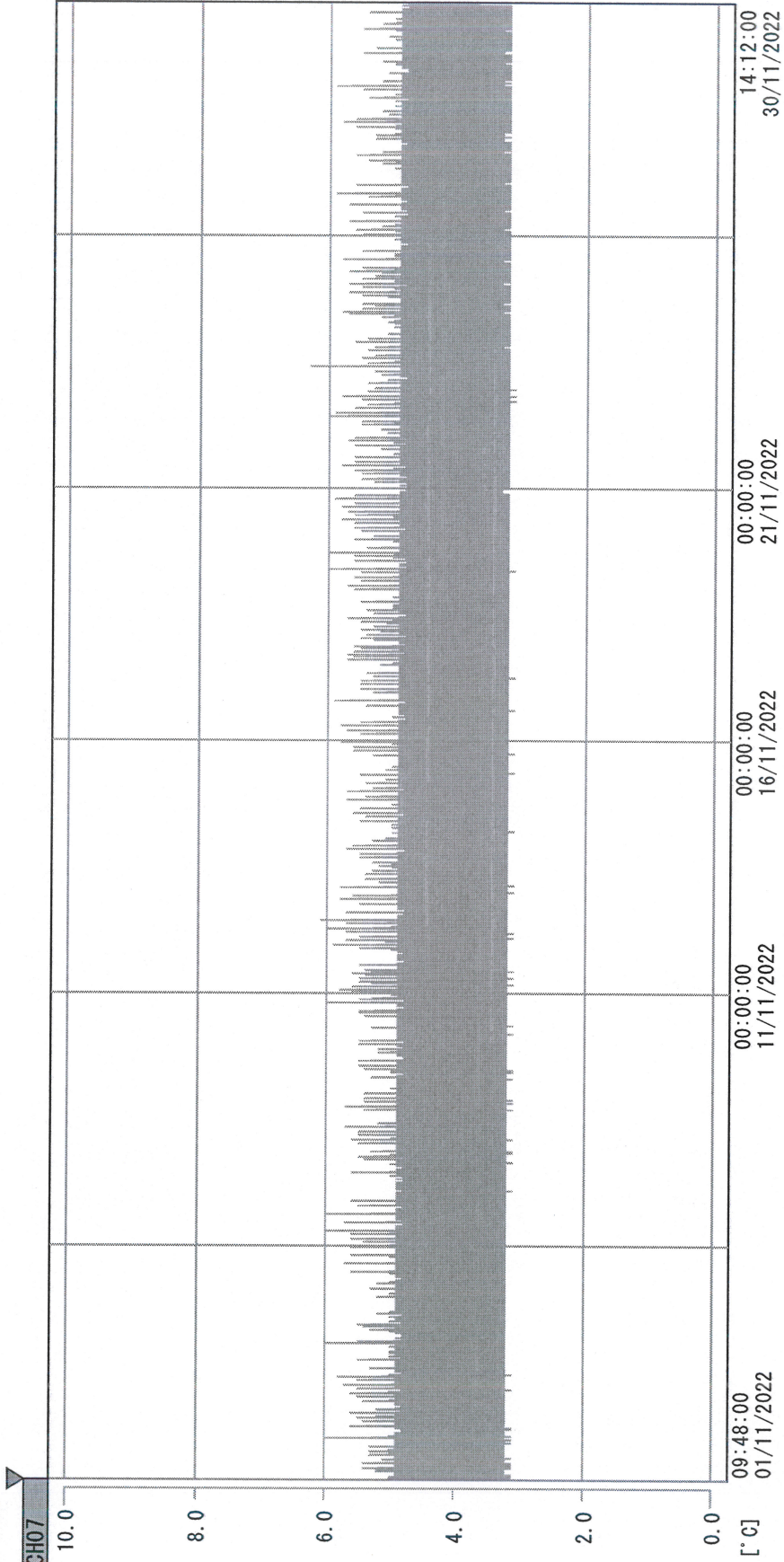
CH07

Date (DD/MMM/YYYY)	Time (24hr)	Temperature (°C)			Signature (Initial)	Comments
		Now	Max	Min		
01 / NOV / 2022	1027	4.0	4.8	3.9	HSC	
02 / NOV / 2022	1022	4.1	5.0	3.9	HSC	
03 / NOV / 2022	1116	4.0	4.9	3.9	KLH	
04 / NOV / 2022	0957	4.1	5.0	3.9	HSC	
05 / NOV / 2022	1119	4.0	4.8	3.9	SYW	
06 / NOV / 2022						Sunday
07 / NOV / 2022	1146	4.2	5.0	3.9	HSC	
08 / NOV / 2022	1028	4.0	4.8	3.9	HSC	
09 / NOV / 2022	1043	4.1	4.8	3.9	HSC	
10 / NOV / 2022	0949	4.0	4.7	3.9	KLH	
11 / NOV / 2022	1011	3.9	5.0	3.9	KLH	
12 / NOV / 2022	1136	3.9	5.1	3.9	KLH	
13 / NOV / 2022						Sunday
14 / NOV / 2022	1116	3.9	4.9	3.8	SYW	
15 / NOV / 2022	0936	4.0	4.9	3.9	HSC	
16 / NOV / 2022	1031	4.1	5.0	3.8	HSC	
17 / NOV / 2022	0935	3.9	5.0	3.9	HSC	
18 / NOV / 2022	1522	4.1	4.9	3.9	HSC	
19 / NOV / 2022	1102	3.9	5.0	3.9	HSC	
20 / NOV / 2022						Sunday
21 / NOV / 2022	1506	3.9	5.0	3.9	HSC	
22 / NOV / 2022	0955	4.5	5.0	3.9	SYW	
23 / NOV / 2022	0939	4.2	5.1	3.8	HSC	
24 / NOV / 2022	1028	3.9	4.8	3.8	HSC	
25 / NOV / 2022	1022	3.9	4.9	3.8	HSC	
26 / NOV / 2022	1148	4.0	4.9	3.8	HSC	
27 / NOV / 2022						Sunday
28 / NOV / 2022	1110	4.1	5.0	3.8	SYW	
29 / NOV / 2022	0932	4.1	4.9	3.8	HSC	
30 / NOV / 2022	1019	4.6	4.7	3.8	HSC	

 Pharmacist: 
 30 NOV 2022

0000_221101094723.dcm

DISP_GRP_1



01/11/2022 09:48:00

1. OPT	-21.2 [°C]	2. Multi	-26.5 [°C]	3. BICT	20.6 [°C]	4. SC-140	4.9 [°C]
5. SC160	3.6 [°C]	6. 201SAR	4.4 [°C]	7. SC160	3.5 [°C]	8. B2GT	17.4 [°C]
TAG01	22.3 [°C]	10. KCC-3	5.1 [°C]	TAG01	-75.0 [°C]	TAG01	-75.0 [°C]

Jgshck

30 NOV 2022