

Temperature Record
Investigational Product Stored at Room Temperature (15 to 25 °C)

Model: TP211283

PHRCR1 (B1)

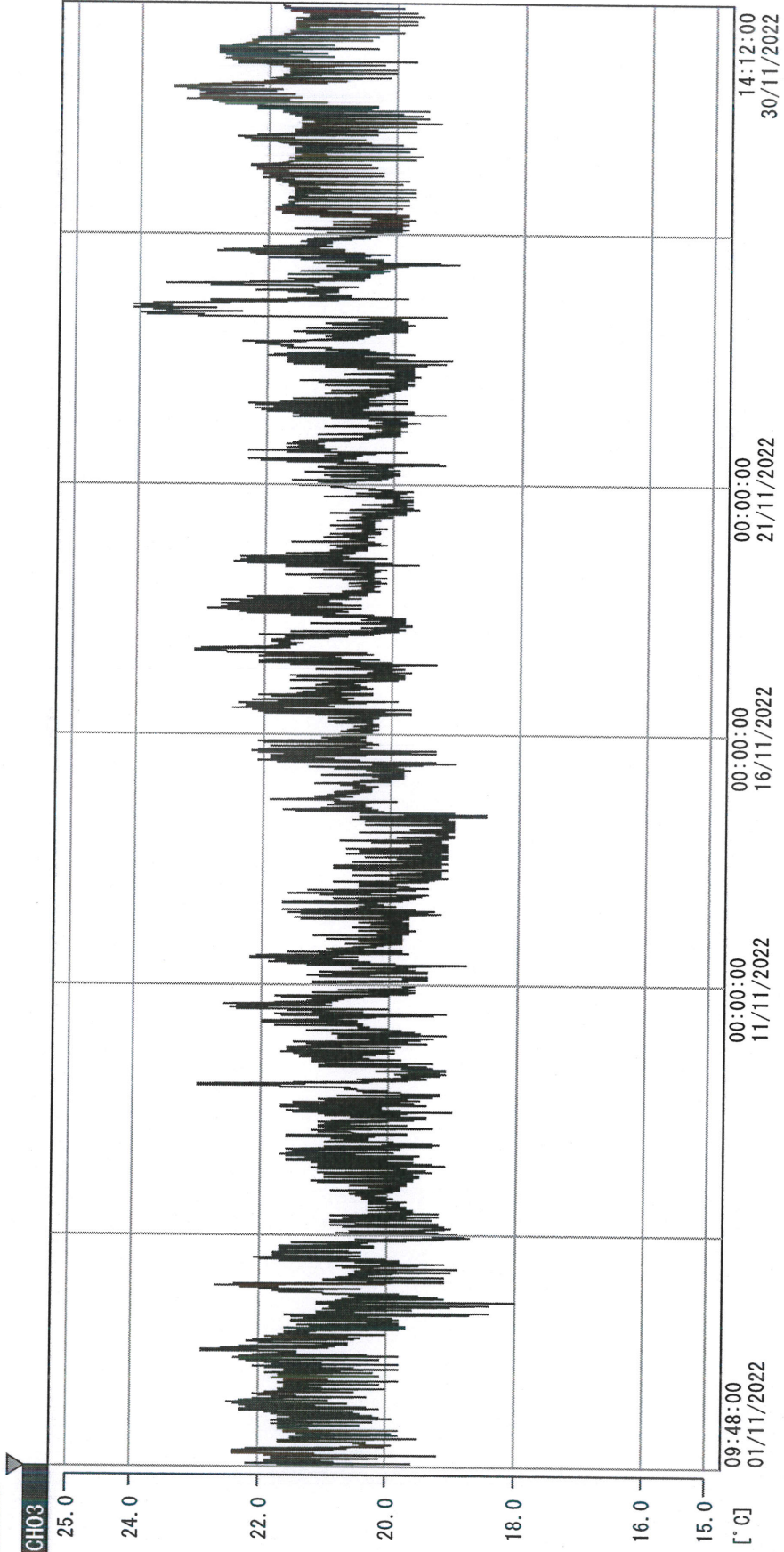
CH03

Date (DD/MM/YY)	Time (24hr)	Temperature (°C)			Signature (Initial)	Comments
		Now	Max	Min		
01 / NOV / 2022	0845	21.4	23.2	20.9	HSC	
02 / NOV / 2022	0928	21.9	22.5	21.1	HSC	
03 / NOV / 2022	0840	21.8	23.0	21.4	KLH	
04 / NOV / 2022	0908	21.8	23.1	21.3	HSC	
05 / NOV / 2022	1107	22.0	23.7	21.1	STW	
06 / NOV / 2022						Sunday
07 / NOV / 2022	0906	21.1	22.4	20.5	HSC	
08 / NOV / 2022	0905	21.0	22.3	20.7	HSC	
09 / NOV / 2022	0822	20.8	23.9	20.6	HSC	
10 / NOV / 2022	0850	22.0	22.7	20.8	KLH	
11 / NOV / 2022	1030	22.2	23.0	21.1	KLH	
12 / NOV / 2022	0941	21.7	22.6	21.2	KLH	
13 / NOV / 2022						Sunday
14 / NOV / 2022	0854	20.9	22.3	20.4	STW	
15 / NOV / 2022	0903	21.8	22.7	20.9	HSC	
16 / NOV / 2022	0911	22.2	22.6	21.4	HSC	
17 / NOV / 2022	0910	21.5	22.8	21.5	HSC	
18 / NOV / 2022	0916	22.0	23.5	21.4	HSC	
19 / NOV / 2022	0925	22.2	23.1	21.7	HSC	
20 / NOV / 2022						Sunday
21 / NOV / 2022	0905	21.8	22.7	21.0	HSC	
22 / NOV / 2022	0904	21.4	23.0	21.2	HSC	
23 / NOV / 2022	0918	21.5	22.6	21.1	HSC	
24 / NOV / 2022	0912	23.2	23.5	21.3	HSC	
25 / NOV / 2022	0859	21.6	24.4	21.4	HSC	
26 / NOV / 2022	0908	21.7	23.2	21.3	HSC	
27 / NOV / 2022						Sunday
28 / NOV / 2022	0903	21.0	22.5	20.9	HSC	
29 / NOV / 2022	0808	21.7	23.4	21.0	HSC	
30 / NOV / 2022	0909	21.3	22.8	21.0	HSC	

 Pharmacist: 

30/NOV/2022

0000_221101094723.dlm
 DISP_GRP_1



01/11/2022 09:48:00

1. OPT	-21.2 [°C]	2. Multi	-26.5 [°C]	3. BICT	20.6 [°C]	4. SC-140	4.9 [°C]
5. SC160	3.6 [°C]	6. 201SAR	4.4 [°C]	7. SC160	3.5 [°C]	8. B2CT	17.4 [°C]
TAG01	22.3 [°C]	10. KCC-3	5.1 [°C]	TAG01	-75.0 [°C]	TAG01	-75.0 [°C]

Zyshok
 30 Nov 2022