

Temperature Record


Investigational Product Stored Under Refrigerated Condition (2 to 8 °C)

CH04

Model: SC-140E-CT (G1404001) TP211284

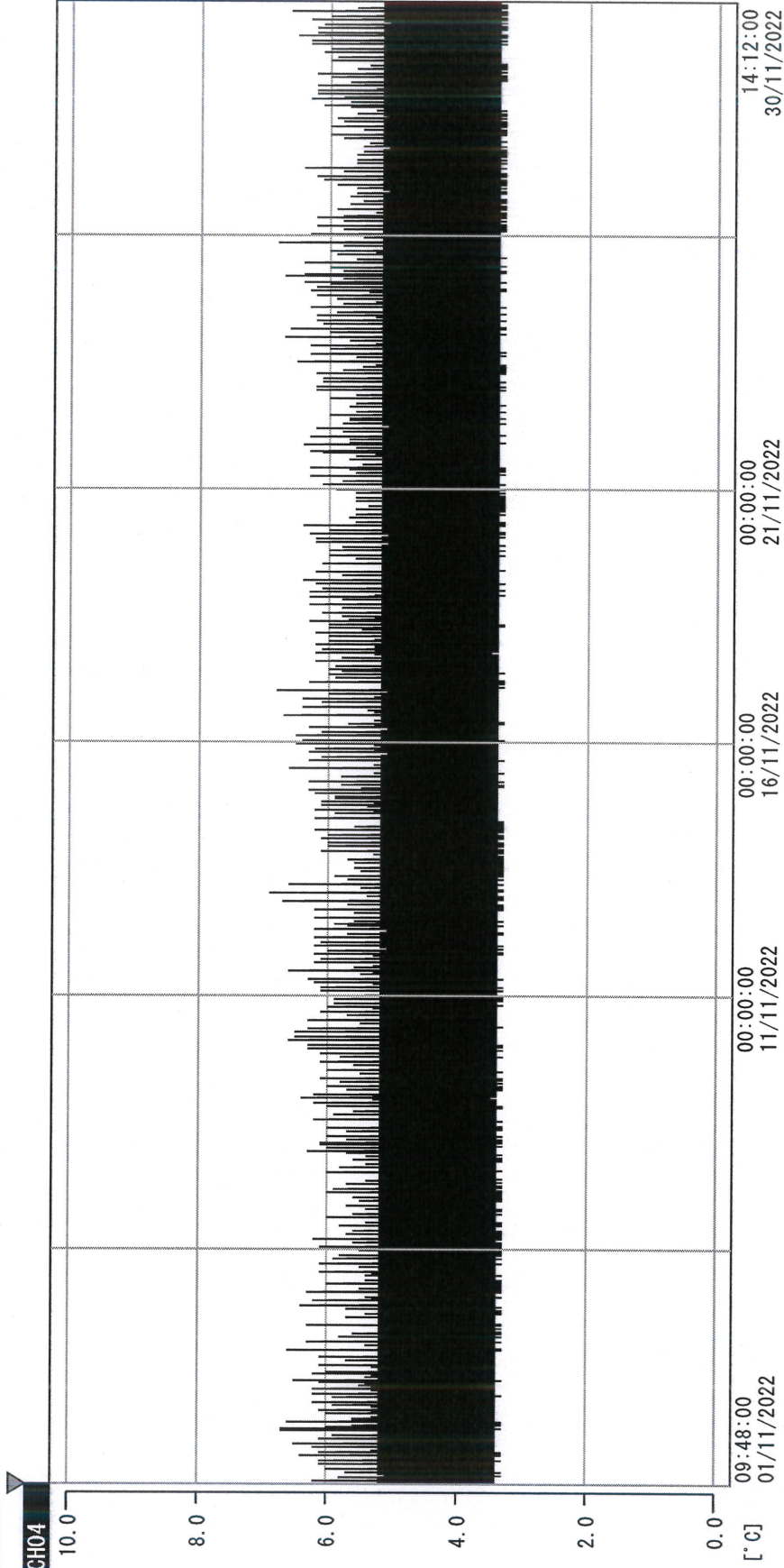
Date (DD/MM/YYYY)	Time (24hr)	Temperature (°C)			Signature (Initial)	Comments
		Now	Max	Min		
01 / NOV / 2022	0844	4.7	5.1	4.4	HSC	
02 / NOV / 2022	0928	4.5	5.1	4.4	HSC	
03 / NOV / 2022	0842	4.5	5.3	4.3	KLH	
04 / NOV / 2022	0907	4.6	5.2	4.4	HSC	
05 / NOV / 2022	1106	4.7	5.1	4.4	AW	
06 / NOV / 2022						Sunday
07 / NOV / 2022	0905	4.6	5.0	4.3	HSC	
08 / NOV / 2022	0904	4.4	5.1	4.4	HSC	
09 / NOV / 2022	0821	4.5	5.1	4.4	HSC	
10 / NOV / 2022	0852	4.7	5.2	4.4	KLH	
11 / NOV / 2022	1032	4.5	5.1	4.4	KLH	
12 / NOV / 2022	0943	4.6	5.2	4.4	KLH	
13 / NOV / 2022						Sunday
14 / NOV / 2022	0857	4.6	5.3	4.4	AW	
15 / NOV / 2022	0902	4.6	5.1	4.3	HSC	
16 / NOV / 2022	0910	4.5	5.2	4.4	HSC	
17 / NOV / 2022	0910	4.5	5.3	4.4	HSC	
18 / NOV / 2022	0915	4.6	5.1	4.4	HSC	
19 / NOV / 2022	0924	4.6	5.1	4.4	HSC	
20 / NOV / 2022						Sunday
21 / NOV / 2022	0904	4.4	5.1	4.4	HSC	
22 / NOV / 2022	0903	4.5	5.1	4.3	HSC	
23 / NOV / 2022	0917	4.6	5.0	4.4	HSC	
24 / NOV / 2022	0911	4.5	5.2	4.4	HSC	
25 / NOV / 2022	0858	4.5	5.2	4.4	HSC	
26 / NOV / 2022	0907	4.6	5.2	4.4	HSC	
27 / NOV / 2022						Sunday
28 / NOV / 2022	0902	4.7	5.2	4.3	HSC	
29 / NOV / 2022	0809	4.6	5.1	4.4	HSC	
30 / NOV / 2022	0908	4.4	5.1	4.3	HSC	

Pharmacist:


 30 Nov 2022

0000_221101094723.dtm

DISP_GRP_1



01/11/2022 09:48:00

1. OPT	-21.2 [°C]	2. Multi	-26.5 [°C]	3. B1CT	20.6 [°C]	4. SC-140	4.9 [°C]
5. SC160	3.6 [°C]	6. 201SAR	4.4 [°C]	7. SC160	3.5 [°C]	8. B2CT	17.4 [°C]
TAG01	22.3 [°C]	10. KCC-3	5.1 [°C]	TAG01	-75.0 [°C]	TAG01	-75.0 [°C]

Ryshch

30 nov 2022