

Temperature Record

Investigational Product Stored Under Refrigerated Condition (2 to 8 °C)

CH05

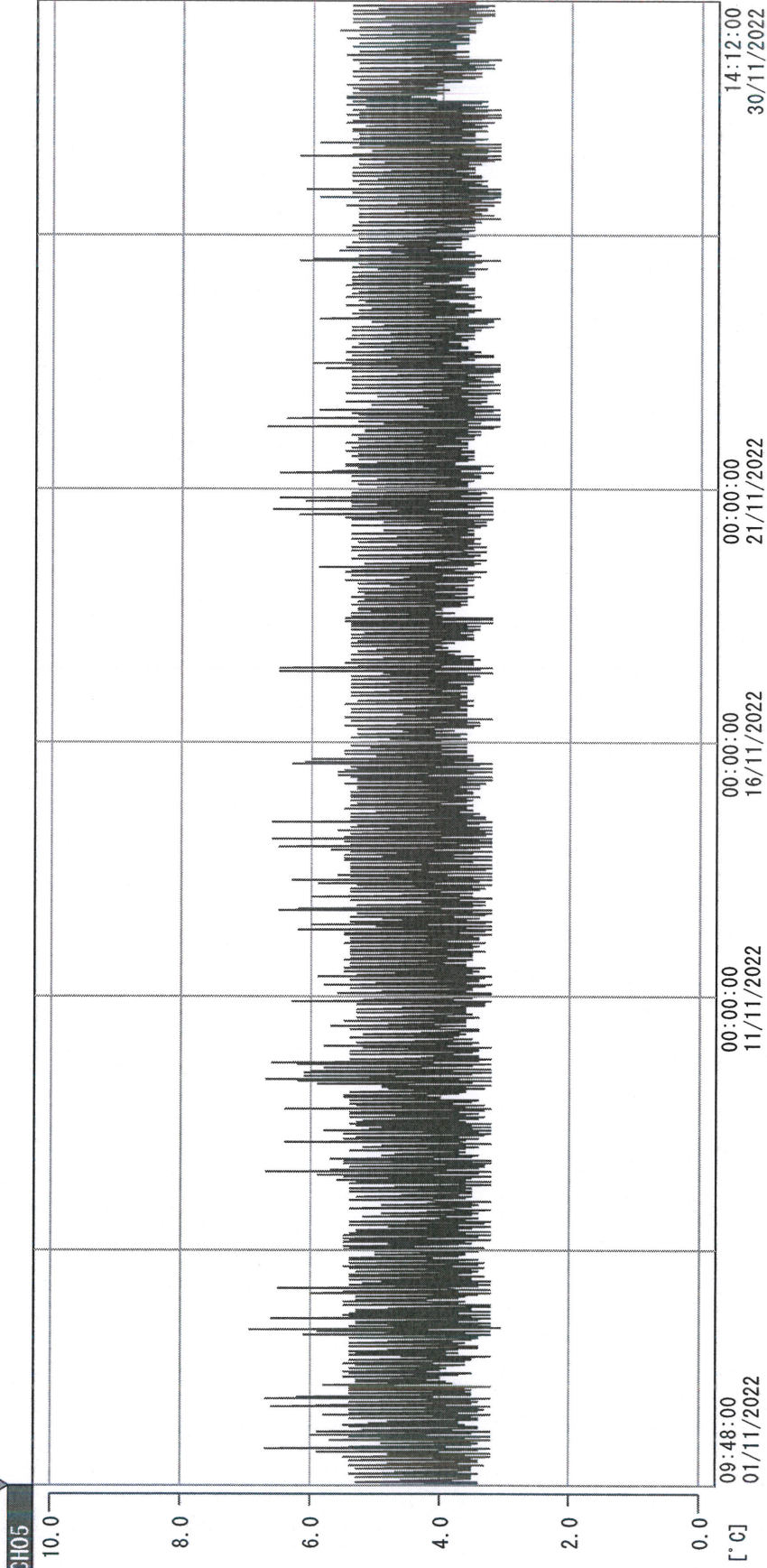
Model: SC-160E (F1222006) TP211295

Date (DD/MMM/YYYY)	Time (24hr)	Temperature (°C)			Signature (Initial)	Comments
		Now	Max	Min		
01 / NOV / 2022	0845	3.8	5.6	3.7	HSC	
02 / NOV / 2022	0929	4.9	5.6	3.7	HSC	
03 / NOV / 2022	0841	5.4	5.6	3.7	KLH	
04 / NOV / 2022	0908	4.1	5.4	3.6	HSC	
05 / NOV / 2022	1105	3.7	6.1	3.6	FW	
06 / NOV / 2022						Sunday
07 / NOV / 2022	0906	4.5	5.1	3.3	HSC	
08 / NOV / 2022	0906	5.0	5.7	3.6	HSC	
09 / NOV / 2022	0823	5.2	5.4	3.6	HSC	
10 / NOV / 2022	0851	4.4	5.7	3.6	KLH	
11 / NOV / 2022	1031	4.3	5.4	3.5	KLH	
12 / NOV / 2022	0942	5.1	5.3	3.5	KLH	
13 / NOV / 2022						Sunday
14 / NOV / 2022	0856	4.3	5.5	3.4	FW	
15 / NOV / 2022	0904	3.8	5.7	3.4	HSC	
16 / NOV / 2022	0912	3.7	5.4	3.5	HSC	
17 / NOV / 2022	0912	5.0	5.1	3.6	HSC	
18 / NOV / 2022	0917	4.8	5.6	3.6	HSC	
19 / NOV / 2022	0925	4.9	5.1	3.7	HSC	
20 / NOV / 2022						Sunday
21 / NOV / 2022	0906	3.8	5.6	3.6	HSC	
22 / NOV / 2022	0905	4.8	6.1	3.7	HSC	
23 / NOV / 2022	0919	5.4	6.0	4.2	HSC	
24 / NOV / 2022	0913	5.3	5.9	4.2	HSC	
25 / NOV / 2022	0900	4.6	5.6	4.1	HSC	
26 / NOV / 2022	0909	3.7	5.4	3.6	HSC	
27 / NOV / 2022						Sunday
28 / NOV / 2022	0904	5.1	5.4	3.5	HSC	
29 / NOV / 2022	0807	4.6	5.1	4.4	HSC	
30 / NOV / 2022	0910	4.0	5.0	3.6	HSC	

 Pharmacist: 
 30 Nov 2022

0000_221101094723.dm

DISP_GRP_1



01/11/2022 09:48:00

1. OPT	-21.2 [°C]	2. Multi	-26.5 [°C]	3. B1CT	20.6 [°C]	4. SC-140	4.9 [°C]
5. SC160	3.6 [°C]	6. 201SAR	4.4 [°C]	7. SC160	3.5 [°C]	8. B2CT	17.4 [°C]
TAG01	22.3 [°C]	10. KCC-3	5.1 [°C]	TAG01	-75.0 [°C]	TAG01	-75.0 [°C]

Zgshch

30 NOV 2022