


Temperature Record
Investigational Product Stored Under Refrigerated Condition (2 to 8 °C)
CH04

Model: SC-140E-CT (G1404001) TP211284

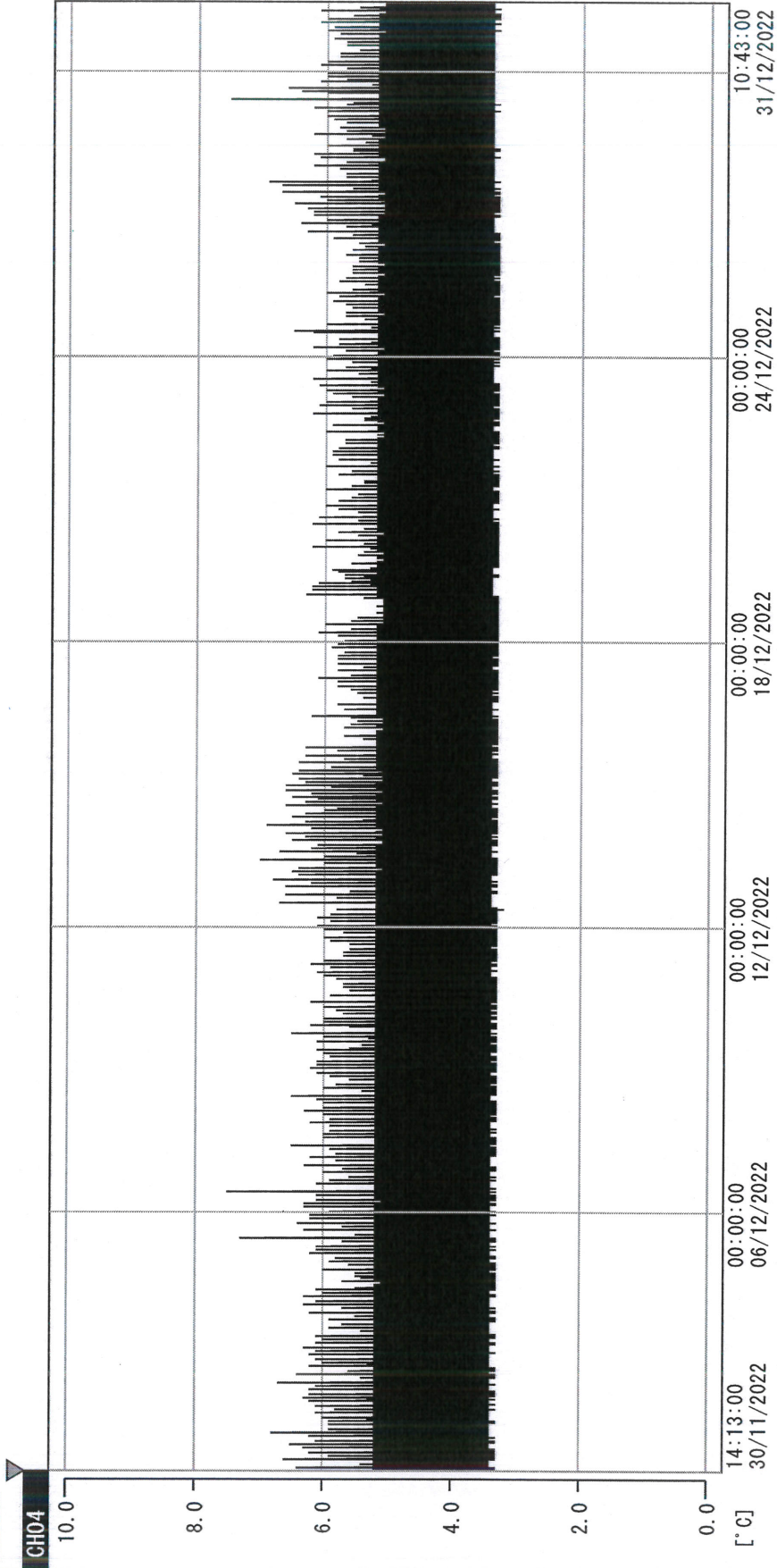
Date (DD/MMM/YYYY)	Time (24hr)	Temperature (°C)			Signature (Initial)	Comments
		Now	Max	Min		
01 / DEC / 2022	0907	4.8	5.2	4.3	HSC	
02 / DEC / 2022	0902	4.4	5.0	4.3	HSC	
03 / DEC / 2022	0907	4.4	5.2	4.3	KLH	
04 / DEC / 2022						Sunday
05 / DEC / 2022	0908	4.4	5.1	4.3	HSC	
06 / DEC / 2022	0912	4.4	5.5	4.3	HSC	
07 / DEC / 2022	0901	4.4	5.5	4.3	HSC	
08 / DEC / 2022	0859	4.5	5.1	4.3	HSC	
09 / DEC / 2022	0903	4.3	5.2	4.3	HSC	
10 / DEC / 2022	0909	4.4	5.1	4.3	HSC	
11 / DEC / 2022						Sunday
12 / DEC / 2022	0923	4.4	5.0	4.3	SW	
13 / DEC / 2022	0918	4.4	5.3	4.2	SW	
14 / DEC / 2022	0932	4.7	5.4	4.3	HSC	
15 / DEC / 2022	0906	4.4	5.2	4.3	HSC	
16 / DEC / 2022	0904	4.4	5.1	4.3	HSC	
17 / DEC / 2022	0912	4.6	5.0	4.3	KLH	
18 / DEC / 2022						Sunday
19 / DEC / 2022	0905	4.4	5.0	4.3	HSC	
20 / DEC / 2022	0914	4.4	4.9	4.3	HSC	
21 / DEC / 2022	0859	4.6	5.0	4.3	HSC	
22 / DEC / 2022	0911	4.3	4.9	4.3	HSC	
23 / DEC / 2022	0905	4.4	5.0	4.3	HSC	
24 / DEC / 2022	0852	4.5	5.0	4.3	HSC	
25 / DEC / 2022						Sunday
26 / DEC / 2022	0907	4.5	5.1	4.3	HSC	
27 / DEC / 2022	0902	4.4	5.1	4.3	HSC	
28 / DEC / 2022	0859	4.4	5.2	4.3	HSC	
29 / DEC / 2022	0912	4.3	5.0	4.3	KLH	
30 / DEC / 2022	0904	4.5	5.4	4.3	HSC	
31 / DEC / 2022	0906	4.3	4.9	4.3	HSC	

Pharmacist:



0000_221130141236.dm

DISP_GRP_1



30/11/2022 14:13:00

1. OPT	-23.6 [°C]	2. Multi	-22.5 [°C]	3. B1CT	21.8 [°C]	4. SC-140	4.5 [°C]
5. SC160	3.5 [°C]	6. 201SAR	3.1 [°C]	7. SC160	3.6 [°C]	8. B2CT	19.0 [°C]
TAG01	4.7 [°C]	10. KCC-3	4.2 [°C]	TAG01	-75.0 [°C]	TAG01	-75.0 [°C]

Handwritten signature

31 DEC 2022