

### Temperature Record

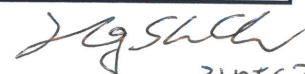
#### Investigational Product Stored Under Refrigerated Condition (2 to 8 °C)

Model: SC-160E (F1222006) TP211295

**CH05**

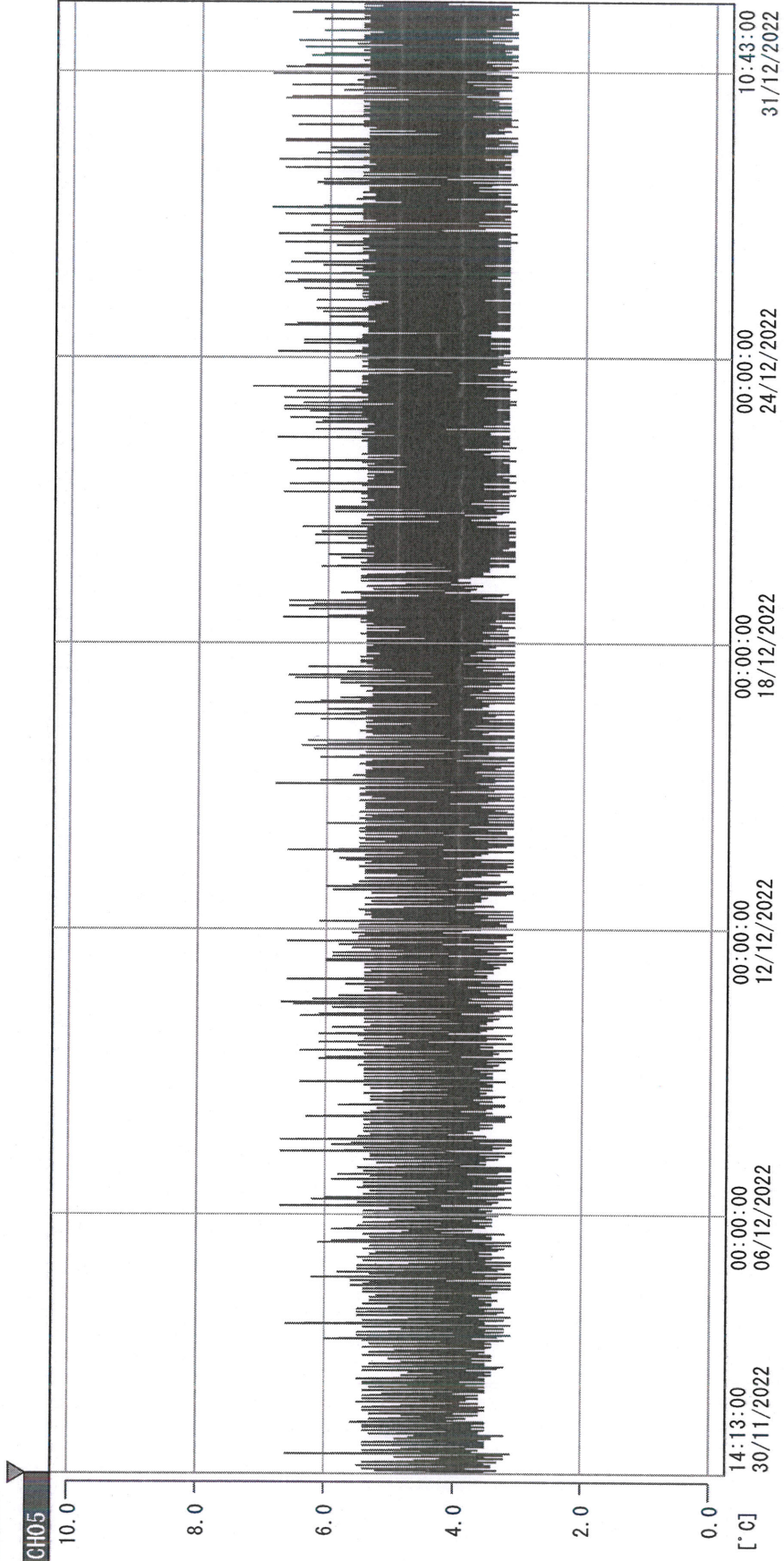
Date (DD/MMM/YYYY)	Time (24hr)	Temperature (°C)			Signature (Initial)	Comments
		Now	Max	Min		
01 / DEC / 2022	0909	4.0	5.5	3.6	HSC	
02 / DEC / 2022	0904	4.5	5.5	3.9	HSC	
03 / DEC / 2022	0906	4.8	5.4	4.6	KLH	
04 / DEC / 2022						Sunday
05 / DEC / 2022	0910	4.5	5.9	4.0	HSC	
06 / DEC / 2022	0914	4.4	5.9	4.1	HSC	
07 / DEC / 2022	0903	4.3	6.1	4.1	HSC	
08 / DEC / 2022	0901	4.1	6.0	4.0	HSC	
09 / DEC / 2022	0905	5.1	5.8	4.0	HSC	
10 / DEC / 2022	0911	4.4	5.7	3.6	HSC	
11 / DEC / 2022						Sunday
12 / DEC / 2022	0922	4.6	5.7	3.6	SW.	
13 / DEC / 2022	0917	4.9	5.4	3.6	SW.	
14 / DEC / 2022	0934	4.0	5.7	3.6	HSC	
15 / DEC / 2022	0908	4.0	5.7	3.6	HSC	
16 / DEC / 2022	0906	3.8	5.6	3.6	HSC	
17 / DEC / 2022	0911	4.1	5.7	3.9	KLH	
18 / DEC / 2022						Sunday
19 / DEC / 2022	0907	5.2	5.7	3.7	HSC	
20 / DEC / 2022	0915	4.1	5.6	4.0	HSC	
21 / DEC / 2022	0900	4.0	5.8	3.8	HSC	
22 / DEC / 2022	0909	4.9	5.8	3.9	HSC	
23 / DEC / 2022	0907	4.5	5.7	3.9	HSC	
24 / DEC / 2022	0854	4.9	6.2	3.9	HSC	
25 / DEC / 2022						Sunday
26 / DEC / 2022	0909	4.8	5.9	4.0	HSC	
27 / DEC / 2022	0904	4.1	5.9	3.8	HSC	
28 / DEC / 2022	0900	4.3	5.9	4.0	HSC	
29 / DEC / 2022	0911	5.2	5.9	4.0	KLH	
30 / DEC / 2022	0906	4.9	5.9	3.7	HSC	
31 / DEC / 2022	0908	4.0	5.8	3.8	HSC	

Pharmacist:

  
 31 DEC 2022

0000\_221130141236.dlm

DISP\_GRP\_1



30/11/2022 14:13:00

1. OPT	-23.6 [°C]	2. Multi	-22.5 [°C]	3. B1CT	21.8 [°C]	4. SC-140	4.5 [°C]
5. SC160	3.5 [°C]	6. 201SAR	3.1 [°C]	7. SC160	3.6 [°C]	8. B2CT	19.0 [°C]
TAG01	4.7 [°C]	10. KCC-3	4.2 [°C]	TAG01	-75.0 [°C]	TAG01	-75.0 [°C]

*Mgsch*  
31 DECEMBER