

Temperature Record

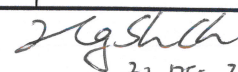
Investigational Product Stored Under Refrigerated Condition (2 to 8 °C)

B2 Model: SC-160E (H1224001) TP211307

CH07

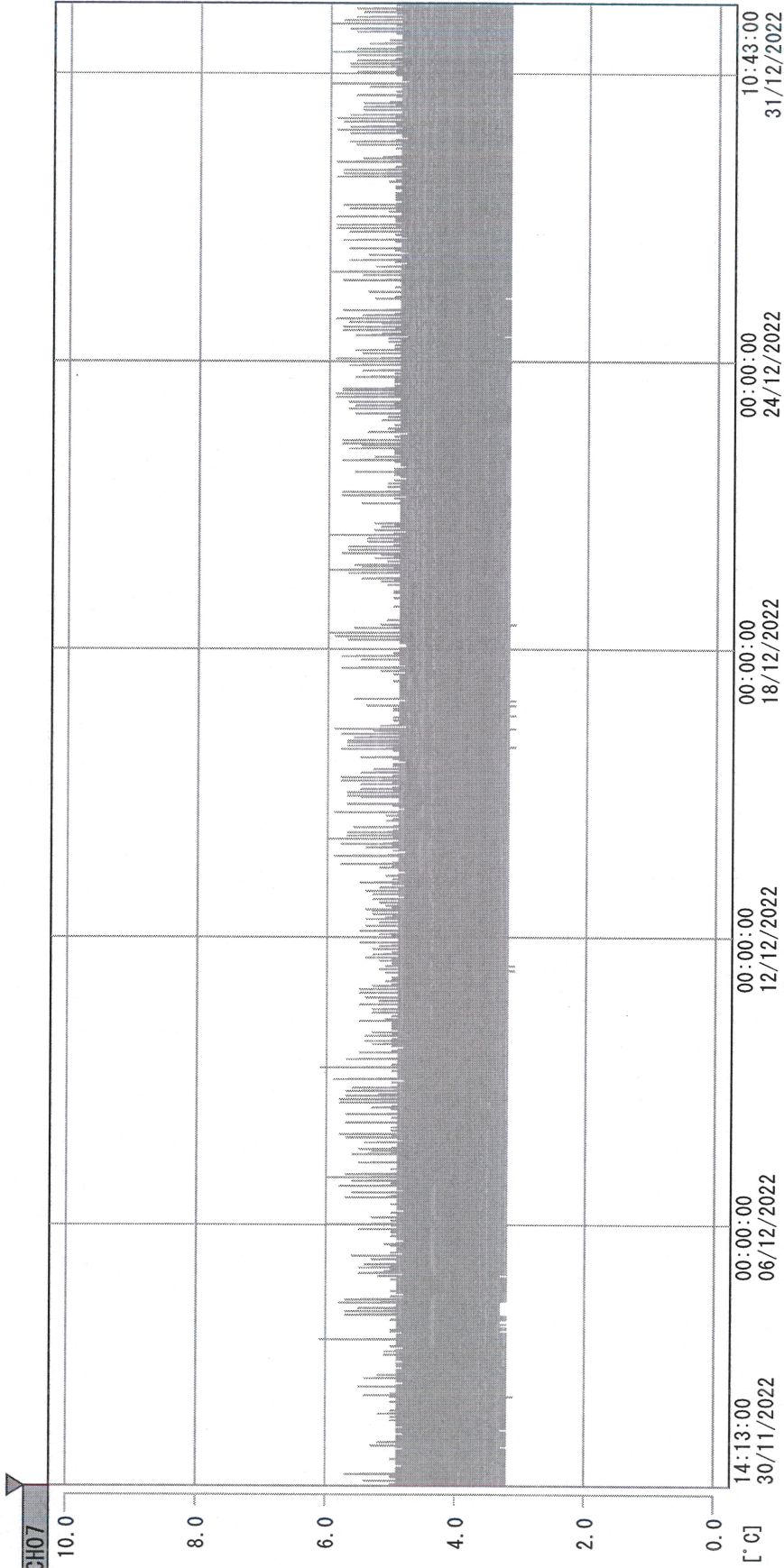
Date (DD/MM/YYYY)	Time (24hr)	Temperature (°C)			Signature (Initial)	Comments
		Now	Max	Min		
01 / DEC / 2022	0957	3.9	4.8	3.8	HSC	
02 / DEC / 2022	1027	3.8	4.5	3.8	HSC	
03 / DEC / 2022	1126	4.1	4.6	3.8	KLH	
04 / DEC / 2022						Sunday
05 / DEC / 2022	1058	4.2	5.1	3.8	HSC	
06 / DEC / 2022	0940	4.2	4.9	3.8	HSC	
07 / DEC / 2022	1031	4.2	5.0	3.8	HSC	
08 / DEC / 2022	0939	4.1	4.8	3.8	HSC	
09 / DEC / 2022	1434	4.0	5.1	3.8	HSC	
10 / DEC / 2022	11:12	4.0	4.6	3.7	HSC	
11 / DEC / 2022						Sunday
12 / DEC / 2022	1339	3.9	4.7	3.8	SWW	
13 / DEC / 2022	0938	3.8	4.6	3.6	SWW	
14 / DEC / 2022	1006	4.0	5.0	3.8	HSC	
15 / DEC / 2022	0945	4.2	5.0	3.8	HSC	
16 / DEC / 2022	1559	3.8	4.9	3.8	HSC	
17 / DEC / 2022	1110	4.2	4.7	3.8	KLH	
18 / DEC / 2022						Sunday
19 / DEC / 2022	0952	3.9	5.1	3.8	HSC	
20 / DEC / 2022	1038	3.8	5.0	3.8	HSC	
21 / DEC / 2022	1202	3.8	4.8	3.8	HSC	
22 / DEC / 2022	0951	4.0	4.8	3.8	HSC	
23 / DEC / 2022	1020	4.0	4.9	3.8	HSC	
24 / DEC / 2022	0913	3.9	4.7	3.8	HSC	
25 / DEC / 2022						Sunday
26 / DEC / 2022	1033	4.1	5.0	3.8	HSC	
27 / DEC / 2022	1216	4.1	5.0	3.8	HSC	
28 / DEC / 2022	1019	3.8	4.9	3.7	HSC	
29 / DEC / 2022	0956	4.0	5.0	3.8	KLH	
30 / DEC / 2022	1127	4.1	5.0	3.8	HSC	
31 / DEC / 2022	0951	3.9	5.0	3.7	HSC	

Pharmacist:


 31 DEC 2022

0000_221130141236. dlm

DISP_GRP_1



30/11/2022 14:13:00

1. OPT	-23.6 [°C]	2. Multi	-22.5 [°C]	3. BICT	21.8 [°C]	4. SC-140	4.5 [°C]
5. SC160	3.5 [°C]	6. 201SAR	3.1 [°C]	7. SC160	3.6 [°C]	8. B2GT	19.0 [°C]
TAG01	4.7 [°C]	10. KCC-3	4.2 [°C]	TAG01	-75.0 [°C]	TAG01	-75.0 [°C]

ZgShh
31/DEC/2022