

**Temperature Record**
**Investigational Product Stored at Room Temperature (15 to 25 °C)**
**CH08**

Model: TP211318

PHRCR2 (B2)

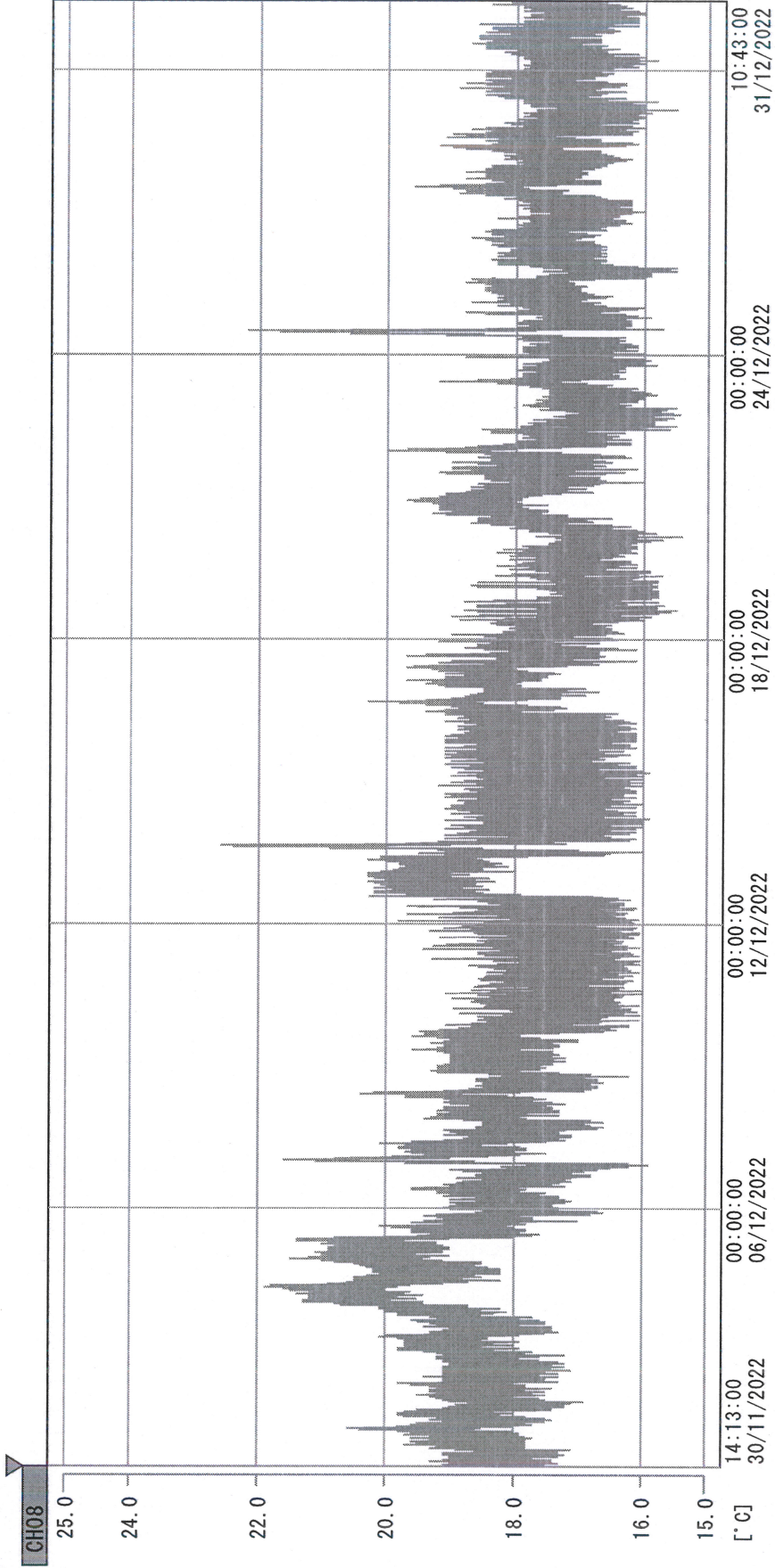
Date (DD/MMM/YYYY)	Time (24hr)	Temperature (°C)			Signature (Initial)	Comments
		Now	Max	Min		
01 / DEC / 2022	0956	19.5	20.0	18.1	HSC	
02 / DEC / 2022	1026	18.8	19.5	18.1	HSC	
03 / DEC / 2022	1125	18.7	19.7	18.3	KLH	
04 / DEC / 2022						Sunday
05 / DEC / 2022	1057	19.1	21.3	18.7	HSC	
06 / DEC / 2022	0939	19.1	19.9	18.0	HSC	
07 / DEC / 2022	1430	18.8	21.0	17.3	HSC	
08 / DEC / 2022	0938	19.6	19.7	17.9	HSC	
09 / DEC / 2022	1433	19.1	20.1	17.9	HSC	
10 / DEC / 2022	11:11	17.1	19.5	16.4	HSC	
11 / DEC / 2022						Sunday
12 / DEC / 2022	1338	16.8	17.4	16.0	STW	
13 / DEC / 2022	0957	18.9	19.8	16.8	STW	
14 / DEC / 2022	1004	18.4	21.9	17.3	HSC	
15 / DEC / 2022	0944	18.5	18.6	17.3	HSC	
16 / DEC / 2022	1558	19.5	19.7	17.3	HSC	
17 / DEC / 2022	1109	17.9	19.6	17.9	KLIH	
18 / DEC / 2022						Sunday
19 / DEC / 2022	0951	16.9	18.8	16.0	HSC	
20 / DEC / 2022	1037	18.5	18.5	16.8	HSC	
21 / DEC / 2022	1201	18.8	19.1	17.5	HSC	
22 / DEC / 2022	0950	17.9	19.4	17.1	HSC	
23 / DEC / 2022	1019	18.1	18.2	16.2	HSC	
24 / DEC / 2022	0912	17.4	18.4	17.2	HSC	
25 / DEC / 2022						Sunday
26 / DEC / 2022	1032	18.1	21.0	16.6	HSC	
27 / DEC / 2022	1215	19.0	19.0	17.0	HSC	
28 / DEC / 2022	1018	17.7	19.2	17.3	HSC	
29 / DEC / 2022	0955	18.1	18.4	17.0	KLIH	
30 / DEC / 2022	1126	17.9	18.4	17.0	HSC	
31 / DEC / 2022	0950	17.7	18.2	17.0	HSC	

 Pharmacist: *Hgshck*

31 DEC 2022

0000\_221130141236.dlm

DISP\_GRP\_1



30/11/2022 14:13:00

1. OPT	-23.6 [°C]	2. Multi	-22.5 [°C]	3. B1CT	21.8 [°C]	4. SC-140	4.5 [°C]
5. SC160	3.5 [°C]	6. 201SAR	3.1 [°C]	7. SC160	3.6 [°C]	8. B2CT	19.0 [°C]
TAG01	4.7 [°C]	10. KCC-3	4.2 [°C]	TAG01	-75.0 [°C]	TAG01	-75.0 [°C]

*Zgshch*  
31 DEC 2022