

Temperature Record

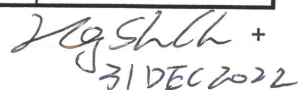
Investigational Product Stored Under Refrigerated Condition (2 to 8 °C)

B2 Model: KCC3 TP 211320

CH10

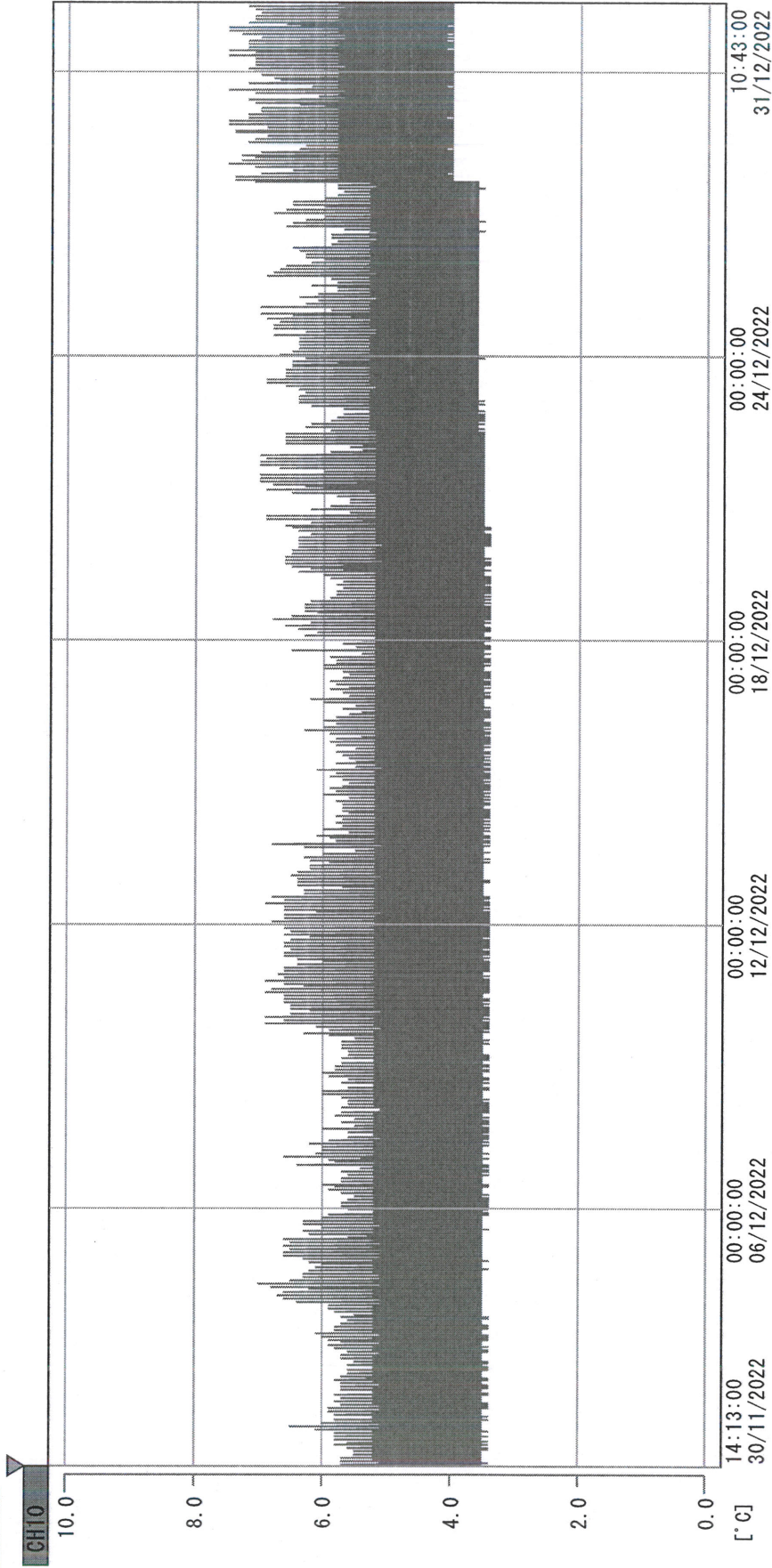
Date (DD/MMM/YYYY)	Time (24hr)	Temperature (°C)			Signature (Initial)	Comments
		Now	Max	Min		
01 / DEC / 2022	0958	4.6	5.3	4.5	HSC	
02 / DEC / 2022	1030	4.7	5.6	4.5	HSC	
03 / DEC / 2022	1128	4.7	5.4	4.5	KLH	
04 / DEC / 2022						Sunday
05 / DEC / 2022	1100	4.6	6.0	4.5	HSC	
06 / DEC / 2022	0945	4.7	5.5	4.3	HSC	
07 / DEC / 2022	1433	4.5	5.7	4.5	HSC	
08 / DEC / 2022	0941	5.1	5.3	4.4	HSC	
09 / DEC / 2022	1437	4.5	5.3	4.4	HSC	
10 / DEC / 2022	1113	4.7	5.8	4.4	HSC	
11 / DEC / 2022						Sunday
12 / DEC / 2022	1340	5.2	5.8	4.4	SYW	
13 / DEC / 2022	0939	5.0	5.7	4.4	SYW	
14 / DEC / 2022	1007	4.5	5.8	4.4	HSC	
15 / DEC / 2022	0947	4.7	5.3	4.4	HSC	
16 / DEC / 2022	1601	4.7	5.4	4.4	HSC	
17 / DEC / 2022	1112	4.5	5.3	4.4	KLH	
18 / DEC / 2022						Sunday
19 / DEC / 2022	0953	4.4	5.7	4.4	HSC	
20 / DEC / 2022	1039	4.5	5.7	4.4	HSC	
21 / DEC / 2022	1203	4.4	5.5	4.3	HSC	
22 / DEC / 2022	0954	4.8	5.9	4.7	HSC	
23 / DEC / 2022	1022	5.1	5.6	4.3	HSC	
24 / DEC / 2022	0915	4.7	5.8	4.5	HSC	
25 / DEC / 2022						Sunday
26 / DEC / 2022	1035	4.7	5.8	4.4	HSC	
27 / DEC / 2022	1218	4.7	5.7	4.5	HSC	
28 / DEC / 2022	1021	5.5	6.3	4.4	HSC	
29 / DEC / 2022	0958	5.1	6.3	4.9	KLH	
30 / DEC / 2022	1129	5.2	6.4	4.9	HSC	
31 / DEC / 2022	0952	5.0	6.3	4.5	HSC	

Pharmacist:



0000_221130141236.dn

DISP_GRP_1



30/11/2022 14:13:00

1. OPT	-23.6 [°C]	2. Multi	-22.5 [°C]	3. B1CT	21.8 [°C]	4. SC-140	4.5 [°C]
5. SC160	3.5 [°C]	6. 201SAR	3.1 [°C]	7. SC160	3.6 [°C]	8. B2CT	19.0 [°C]
TAG01	4.7 [°C]	10. KCC-3	4.2 [°C]	TAG01	-75.0 [°C]	TAG01	-75.0 [°C]

Handwritten signature
 31 DEC 2022