


Temperature Record
Investigational Product Stored at Room Temperature (15 to 25 °C)
CH03

Model: TP211283

PHRCR1 (B1)

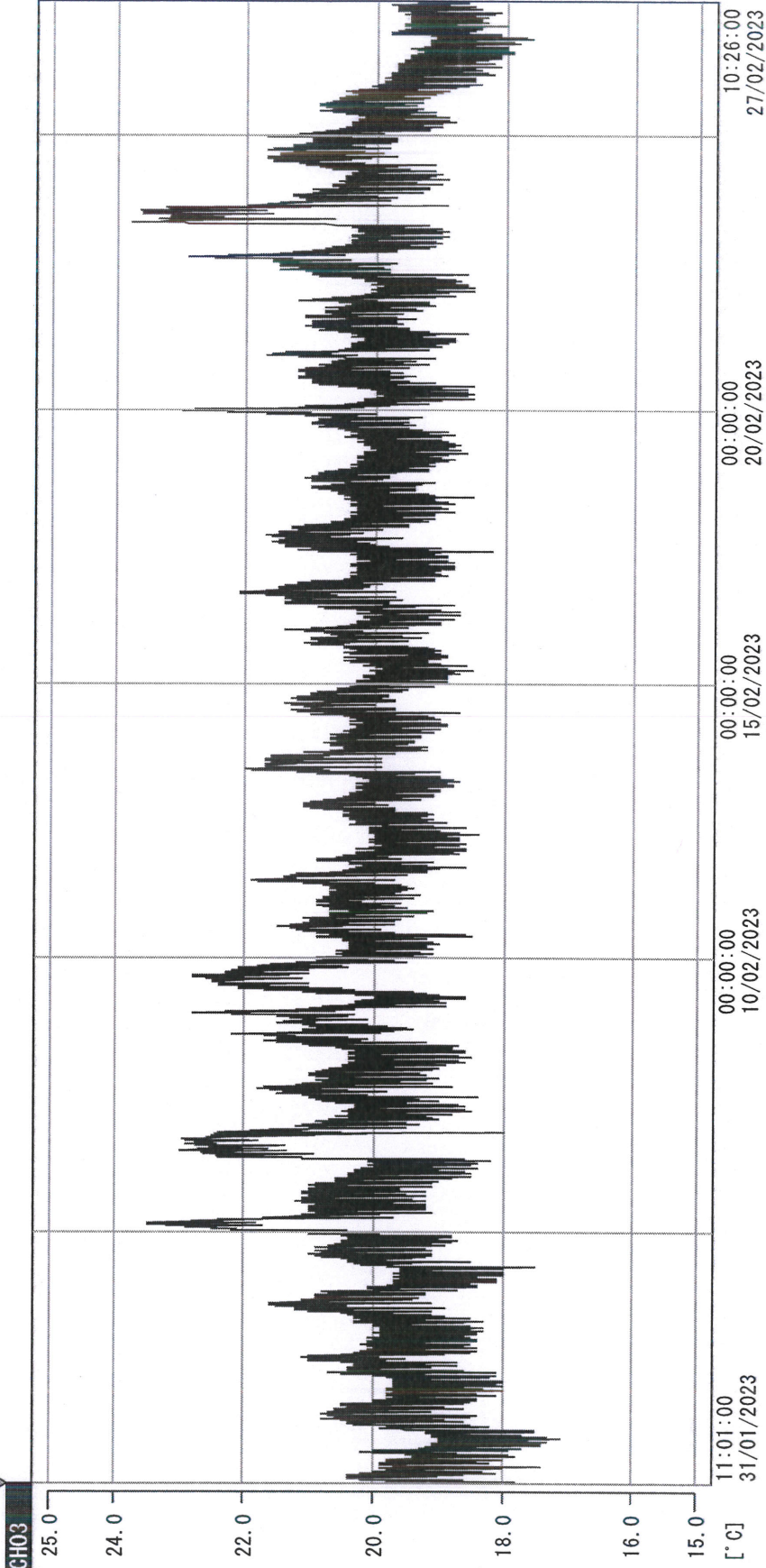
Date (DD/MM/YY)	Time (24hr)	Temperature (°C)			Signature (Initial)	Comments
		Now	Max	Min		
01 / FEB / 2023	0904	19.2	20.8	18.7	HSC	
02 / FEB / 2023	0909	19.8	21.0	19.2	HSC	
03 / FEB / 2023	0907	20.2	21.3	19.7	SW	
04 / FEB / 2023	0913	20.2	21.2	19.4	SW	
05 / FEB / 2023						Sunday
06 / FEB / 2023	0820	20.6	23.8	19.6	HSC	
07 / FEB / 2023	0812	20.3	24.2	19.9	HSC	
08 / FEB / 2023	0903	20.3	21.9	19.9	HSC	
09 / FEB / 2023	0947	21.8	22.9	20.0	HSC	
10 / FEB / 2023	0903	21.0	22.8	20.4	HSC	
11 / FEB / 2023	0905	21.5	21.9	20.5	HSC	
12 / FEB / 2023						Sunday
13 / FEB / 2023	0909	21.1	23.1	20.1	HSC	
14 / FEB / 2023	0907	20.6	22.3	19.9	HSC	
15 / FEB / 2023	0900	20.4	21.8	20.0	HSC	
16 / FEB / 2023	0905	20.8	21.5	20.1	HSC	
17 / FEB / 2023	0906	20.4	22.1	20.2	HSC	
18 / FEB / 2023	0910	20.3	22.1	20.1	SW	
19 / FEB / 2023						Sunday
20 / FEB / 2023	0904	20.2	22.9	19.8	HSC	
21 / FEB / 2023	0903	20.3	21.8	20.1	HSC	
22 / FEB / 2023	0906	20.2	21.4	19.9	HSC	
23 / FEB / 2023	0902	21.3	22.9	20.2	HSC	
24 / FEB / 2023	0814	20.3	23.9	20.3	HSC	
25 / FEB / 2023	^{HSC} _{23 FEB 2023} 200903	20.7	22.2	20.2	HSC	
26 / FEB / 2023						Sunday
27 / FEB / 2023	0810	20.0	21.2	18.9	HSC	
28 / FEB / 2023						Holiday

Pharmacist:


 27 FEB 2023

0000_230131110010.dfm

DISP_GRP_1



31/01/2023 11:01:00

1. OPT	-22.0 [°C]	2. Multi	-22.4 [°C]	3. B1CT	19.8 [°C]	4. SC-140	3.5 [°C]
5. SC160	4.8 [°C]	6. 20/SAR	2.8 [°C]	7. SC160	3.3 [°C]	8. B2CT	17.5 [°C]
22070604	4.1 [°C]	10. KCC-3	20.1 [°C]	TAG01	-75.0 [°C]	TAG01	-75.0 [°C]

Mg Shukh
27 FEB 2023