

Temperature Record

Investigational Product Stored at Room Temperature (15 to 25 °C)

CH03

Model: TP213023

PHRCR1 (B1)

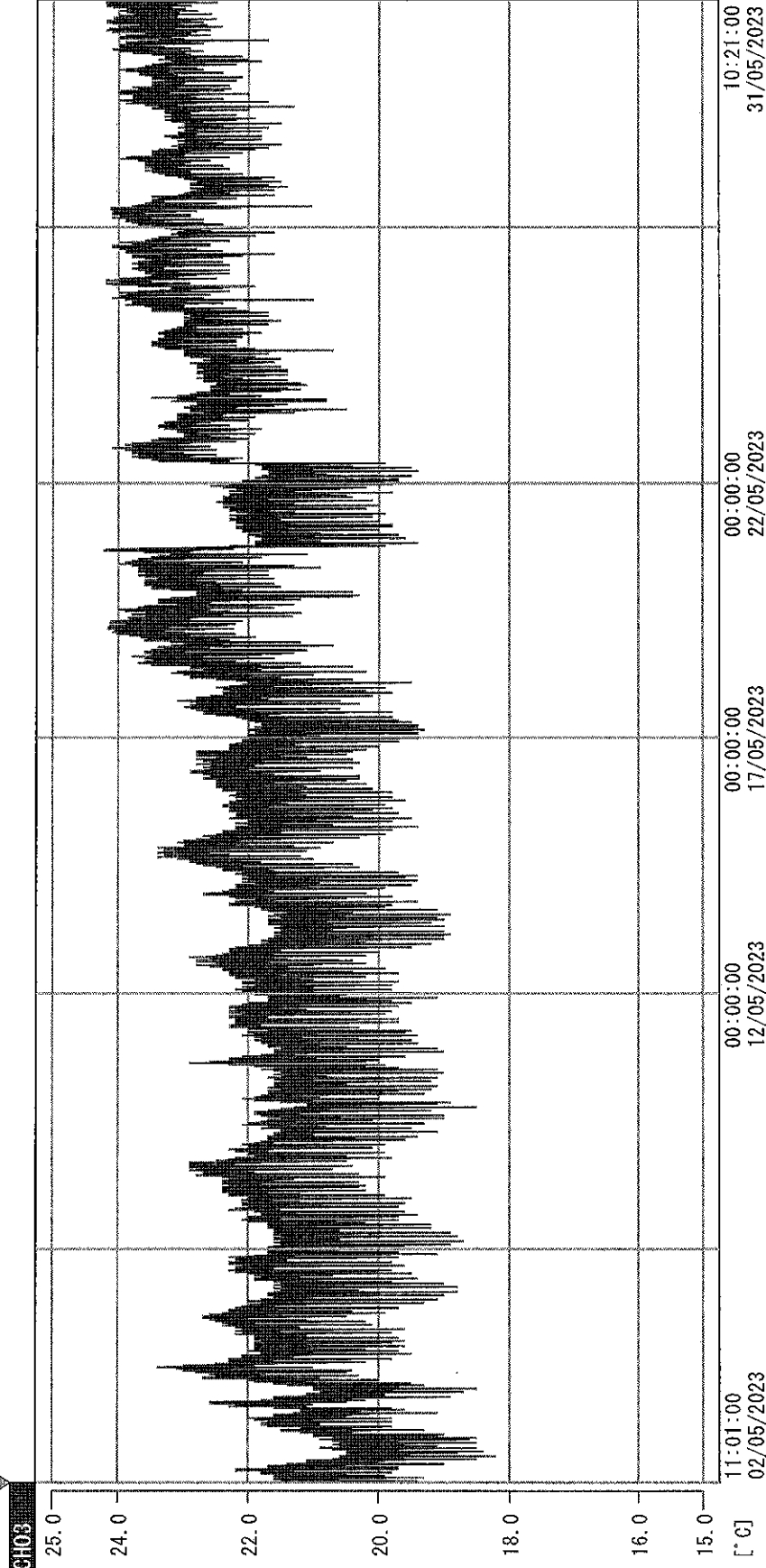
Date (DD/MMM/YYYY)	Time (24hr)	Temperature (°C)			Signature (Initial)	Comments
		Now	Max	Min		
01 / MAY / 2023	0909	21.5	22.5	20.3	HSC	
02 / MAY / 2023	1000	22.4	22.8	21.1	HSC	
03 / MAY / 2023	0902	21.2	23.1	20.5	HSC	
04 / MAY / 2023	0859	22.0	23.4	20.9	HSC	
05 / MAY / 2023	0809	22.5	24.0	21.9	HSC	
06 / MAY / 2023	0910	22.1	23.3	21.2	SYW	
07 / MAY / 2023						Sunday
08 / MAY / 2023	0909	22.4	22.9	21.0	SYW	
09 / MAY / 2023	0926	22.3	23.5	21.5	SYW	
10 / MAY / 2023	0902	21.7	22.5	21.0	HSC	
11 / MAY / 2023	0813	22.5	23.4	21.3	HSC	
12 / MAY / 2023	0803	22.6	22.8	21.5	HSC	
13 / MAY / 2023	0824	22.0	23.4	21.2	YPL	
14 / MAY / 2023						Sunday
15 / MAY / 2023	0907	22.3	23.6	21.2	HSC	
16 / MAY / 2023	0901	22.8	23.3	21.8	HSC	
17 / MAY / 2023	0904	22.3	23.3	21.5	HSC	
18 / MAY / 2023	0914	22.6	23.6	21.8	HSC	
19 / MAY / 2023	0808	24.0	24.2	22.6	HSC	
20 / MAY / 2023	0806	24.1	24.3	22.7	HSC	
21 / MAY / 2023						Sunday
22 / MAY / 2023	0808	23.3	24.4	22.6	HSC	
23 / MAY / 2023	0914	22.8	24.2	22.3	HSC	
24 / MAY / 2023	0906	22.7	23.3	22.3	HSC	
25 / MAY / 2023	0909	23.2	23.6	22.5	HSC	
26 / MAY / 2023	0914	23.5	24.2	23.1	SYW	
27 / MAY / 2023	0919	24.0	24.4	22.7	SYW	
28 / MAY / 2023						Sunday
29 / MAY / 2023	0804	23.2	24.2	22.4	HSC	
30 / MAY / 2023	0902	23.4	24.1	22.8	HSC	
31 / MAY / 2023	0908	22.4	24.4	21.9	HSC	

Pharmacist:

SYW
3/MAY/2023

0000_230502110046.dfm

DISP_GRP_1



02/05/2023 11:01:00

1. OPT	-23.4 [°C]	2. Multi	-25.9 [°C]	3. BICI	21.0 [°C]	4. SG-140	3.8 [°C]
5. SG160	4.2 [°C]	6. 20 SAR	2.9 [°C]	7. SG160	3.5 [°C]	8. B2C1	19.8 [°C]
22070604	2.6 [°C]	10. KGG-3	22.9 [°C]	TAG01	-75.0 [°C]	TAG01	-75.0 [°C]

Zgshh
31/MAY/2023