

**Temperature Record**
**Investigational Product Stored at Room Temperature (15 to 25 °C)**
**CH08**

Model: TP213039

PHRCR2 (B2)

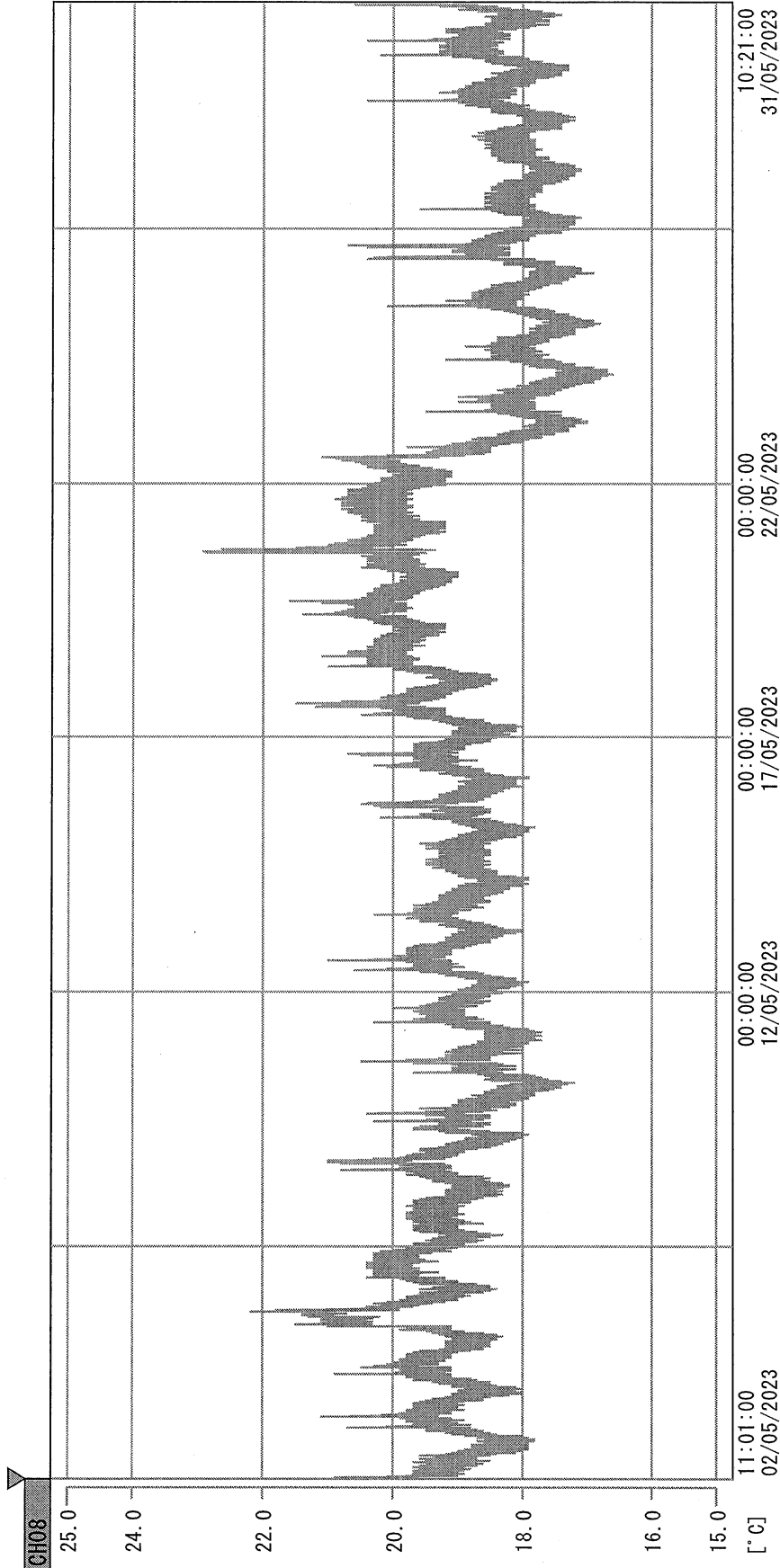
Date (DD/MMM/YYYY)	Time (24hr)	Temperature (°C)			Signature (Initial)	Comments
		Now	Max	Min		
01 / MAY / 2023	1038	19.2	20.3	18.2	HSC	
02 / MAY / 2023	0948	20.4	20.4	18.5	HSC	
03 / MAY / 2023	1040	20.3	20.9	18.8	HSC	
04 / MAY / 2023	1140	20.4	20.8	19.1	SW	
05 / MAY / 2023	1000	20.8	20.8	19.2	HSC	
06 / MAY / 2023	0918	20.3	22.2	19.5	SW	
07 / MAY / 2023						Sunday
08 / MAY / 2023	1135	20.5	20.7	19.1	SW	
09 / MAY / 2023	1031	20.0	21.1	18.8	SW	
10 / MAY / 2023	0938	19.4	20.3	18.2	HSC	
11 / MAY / 2023	0929	20.1	20.6	18.7	HSC	
12 / MAY / 2023	0946	20.0	20.1	18.8	HSC	
13 / MAY / 2023	1140	20.0	20.9	19.0	YPL	
14 / MAY / 2023						Sunday
15 / MAY / 2023	0933	19.5	20.3	18.9	HSC	
16 / MAY / 2023	0952	19.9	20.8	18.9	HSC	
17 / MAY / 2023	1019	20.4	20.4	19.1	HSC	
18 / MAY / 2023	0930	20.6	21.4	19.5	HSC	
19 / MAY / 2023	0943	21.3	21.3	20.2	HSC	
20 / MAY / 2023	0811	20.4	21.4	19.8	HSC	
21 / MAY / 2023						Sunday
22 / MAY / 2023	1209	21.2	23.8	20.0	HSC	
23 / MAY / 2023	0950	18.9	21.0	18.0	HSC	
24 / MAY / 2023	1003	18.9	19.4	17.7	HSC	
25 / MAY / 2023	1119	19.0	19.7	17.9	HSC	
26 / MAY / 2023	1009	19.8	19.9	18.0	SW	
27 / MAY / 2023	0846	18.8	20.2	18.1	SW	
28 / MAY / 2023						Sunday
29 / MAY / 2023	1205	19.5	19.5	18.1	SW	
30 / MAY / 2023	0941	19.7	20.1	18.2	HSC	
31 / MAY / 2023	0931	20.2	20.2	18.5	HSC	

Pharmacist:



0000\_230502110046.dlm

DISP\_GRP\_1



02/05/2023 11:01:00

1. OPT	-23.4 [°C]	2. Multi	-25.9 [°C]	3. B1G1	21.0 [°C]	4. SC-140	3.8 [°C]
5. SC160	4.2 [°C]	6. 201SAR	2.9 [°C]	7. SC160	3.5 [°C]	8. B2C1	19.8 [°C]
22070604	2.6 [°C]	10. KCC-3	22.9 [°C]	TAG01	-75.0 [°C]	TAG01	-75.0 [°C]

*Zgshkh*

3/MAY 2023