

Temperature Record

Investigational Product Stored at Room Temperature (15 to 25 °C)

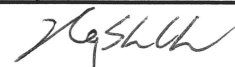
CH08

Model: TP213039

PHRCR2 (B2)

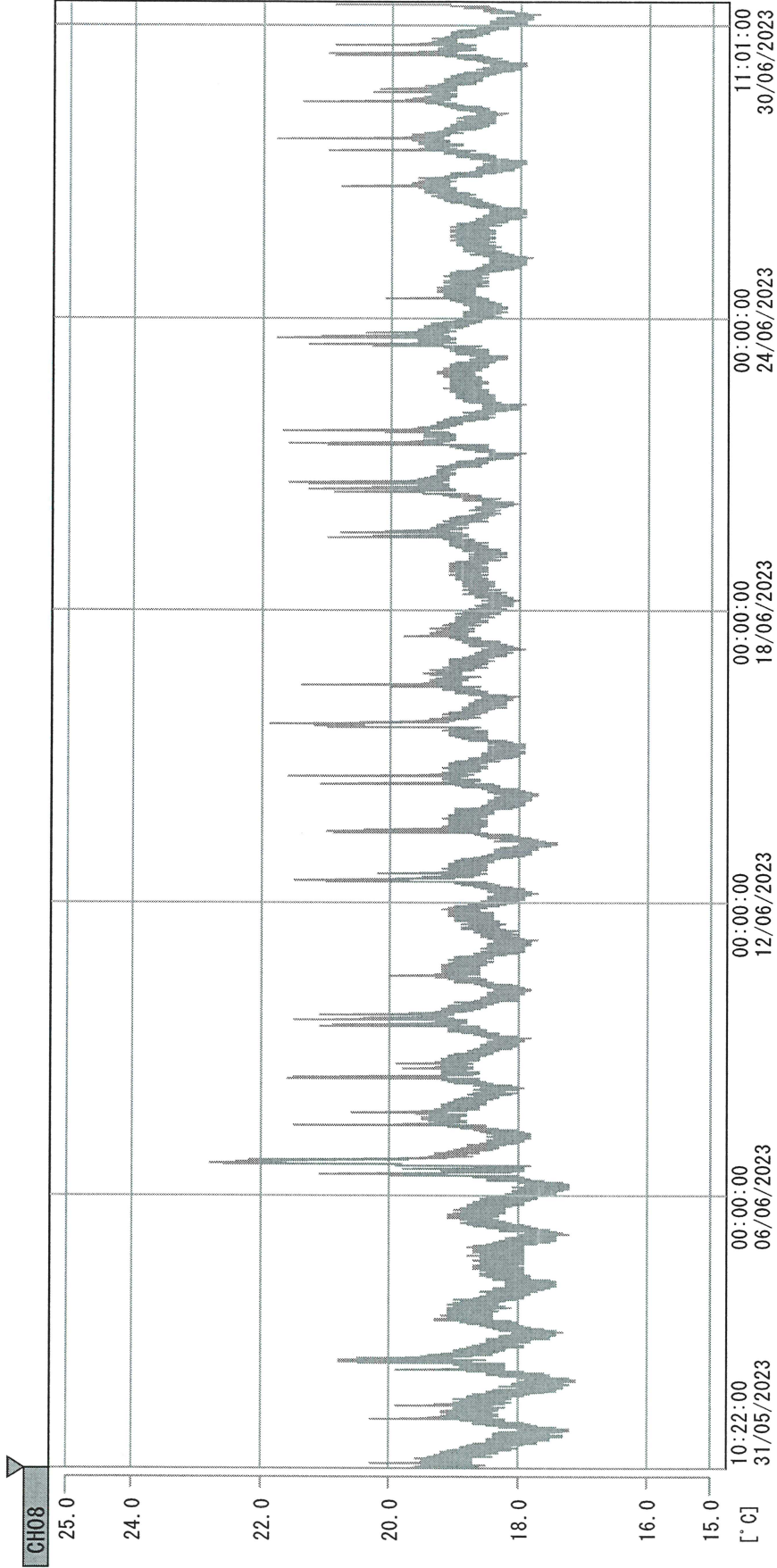
Date (DD/MMM/YYYY)	Time (24hr)	Temperature (°C)			Signature (Initial)	Comments
		Now	Max	Min		
01 / JUN / 2023	1003	20.1	20.4	18.2	HSC	
02 / JUN / 2023	1005	19.7	20.2	18.1	HSC	
03 / JUN / 2023	1019	19.3	20.7	18.3	HSC	
04 / JUN / 2023						Sunday
05 / JUN / 2023	0902	19.1	19.6	18.0	HSC	
06 / JUN / 2023	0903	18.7	20.1	18.1	HSC	
07 / JUN / 2023	1017	20.7	23.6	18.7	HSC	
08 / JUN / 2023	0939	21.0	21.0	19.0	KLH	
09 / JUN / 2023	1111	20.4	21.1	18.7	SW	
10 / JUN / 2023	1114	19.8	20.7	18.8	HSC	
11 / JUN / 2023						Sunday
12 / JUN / 2023	1000	19.5	20.0	18.7	HSC	
13 / JUN / 2023	0959	20.1	20.9	18.4	HSC	
14 / JUN / 2023	1005	20.1	20.7	18.7	HSC	
15 / JUN / 2023	1417	20.3	20.7	18.8	HSC	
16 / JUN / 2023	1034	20.2	21.4	19.2	SW	
17 / JUN / 2023	1040	19.7	20.4	19.0	KLH	
18 / JUN / 2023						Sunday
19 / JUN / 2023	1422	20.3	20.5	19.0	KLH	
20 / JUN / 2023	1003	20.5	20.5	19.1	HSC	
21 / JUN / 2023	0959	21.0	21.0	18.9	HSC	
22 / JUN / 2023						Holiday
23 / JUN / 2023	1000	20.1	21.2	19.0	HSC	
24 / JUN / 2023	0917	19.6	21.2	19.1	SW	
25 / JUN / 2023						Sunday
26 / JUN / 2023	1613	20.1	20.1	18.8	HSC	
27 / JUN / 2023	1009	20.2	20.3	19.0	KLH	
28 / JUN / 2023	1005	20.7	21.2	19.2	HSC	
29 / JUN / 2023	0939	20.4	20.8	19.0	HSC	
30 / JUN / 2023	0952	20.3	20.5	18.8	HSC	

Pharmacist:


 30 JUN 2023

0000_230531102128.dlm

DISP_GRP_1



31/05/2023 10:22:00

1. OPT	-23.9 [°C]	2. Multi	-24.6 [°C]	3. B1CT	23.5 [°C]	4. SC-140	5.2 [°C]
5. SC160	5.8 [°C]	6. 201SAR	4.3 [°C]	7. SC160	3.3 [°C]	8. B2CT	20.0 [°C]
22070604	4.3 [°C]	10. KCC-3	24.0 [°C]	TAG01	-75.0 [°C]	TAG01	-75.0 [°C]

29 shk
30 JUN 2023